



MODERN AMERICAN BISTRO

2425 NYS ROUTE 52, HOPEWELL JUNCTION, NY 12533



BUSINESS OPPORTUNITY: FULLY OPERATIONAL, TURN KEY

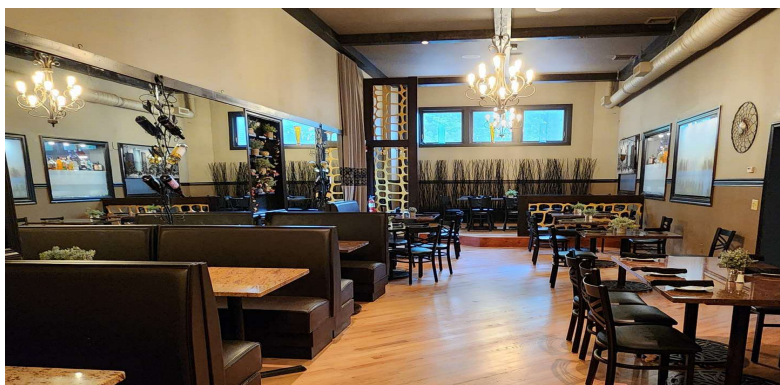
ADDRESS: 2425 NYS Route 52
Hopewell Junction, NY

12533

BUSINESS OPERATIONS: Lunch, Dinner, Catering &
Private Parties, Online
Deliveries, and Outdoor
Seating, Full Bar, High Tops
with Liquor License

BUSINESS MENU: Appetizers, Freshly Cooked
Entrees, Salads, Hand
Helds / Sliders, Pizza,
Pasta Dishes, Sides,
Children's Menu, Specialty
Drinks, Bottled Beverages,
Cafe, Coffee, Desserts

ASKING PRICE: \$150,000



PROPERTY OVERVIEW

CR Properties Group, LLC is pleased to offer For Sale a Fully Operational, Turn Key American Bistro Business located on 2425 NYS Route 52, Hopewell Junction, NY 12533. Plated, a Modern American Bistro which is known for its freshly made foods, desserts and tasty drinks. The Business Operations include Lunch, Dinner, Catering & Private Parties, Online Deliveries, and Outdoor Seating. A full Inventory list is available upon request.

Business Website: <https://www.platedbistro.com/>



CR Properties Group, LLC
295 Main Street
Poughkeepsie, NY 12601
www.crproperties.com



ALL DATA BELIEVED TO BE ACCURATE BUT NOT WARRANTED

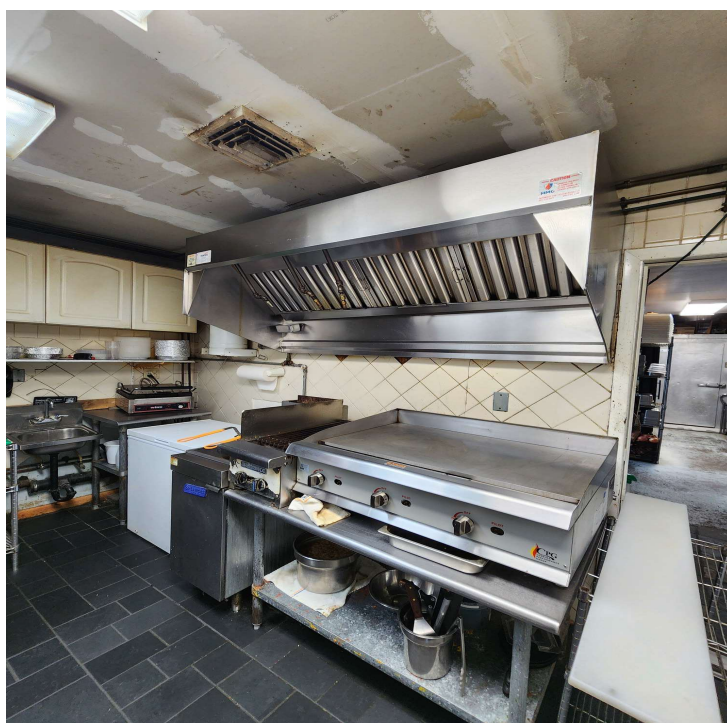
For more information:

Thomas M. Cervone
845.485.3100
tom@crproperties.com



FULLY OPERATIONAL KITCHEN, TURN KEY WALK IN FRIDGE & FREEZER, OVERHEAD KITCHEN HOODS

12 BURNER STOVE, FLAT TOP & FLAME GRILL, PREP STATIONS



CR Properties Group, LLC
295 Main Street
Poughkeepsie, NY 12601
www.crproperties.com



ALL DATA BELIEVED TO BE ACCURATE BUT NOT WARRANTED

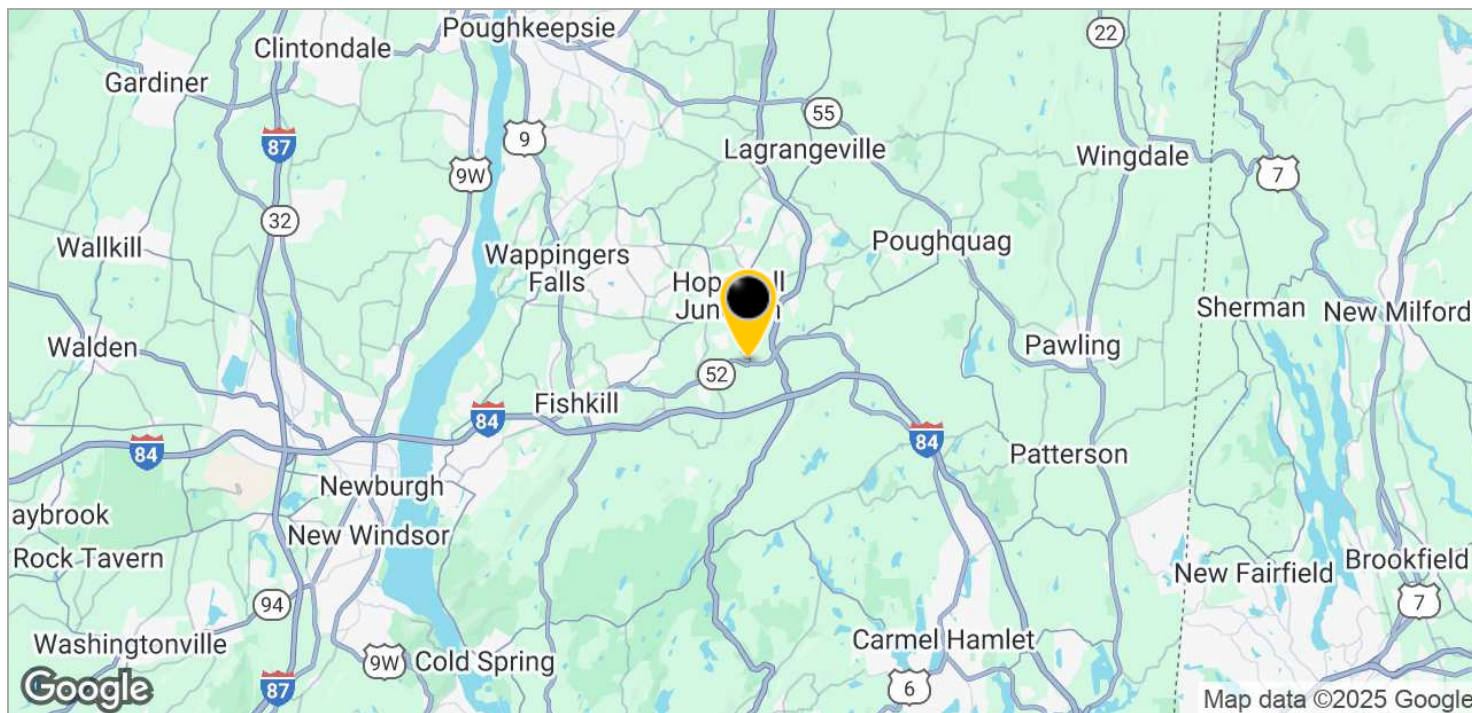
For more information:

Thomas M. Cervone
845.485.3100
tom@crproperties.com



INTERSTATE 84, EXIT 50 - (5 MINUTES)
2425 NYS ROUTE 52, HOPEWELL JUNCTION, NY 12533

TACONIC STATE PARKWAY, EXIT 38 - (2 MINUTES)



CR Properties Group, LLC
295 Main Street
Poughkeepsie, NY 12601
www.crproperties.com



ALL DATA BELIEVED TO BE ACCURATE BUT NOT WARRANTED

For more information:

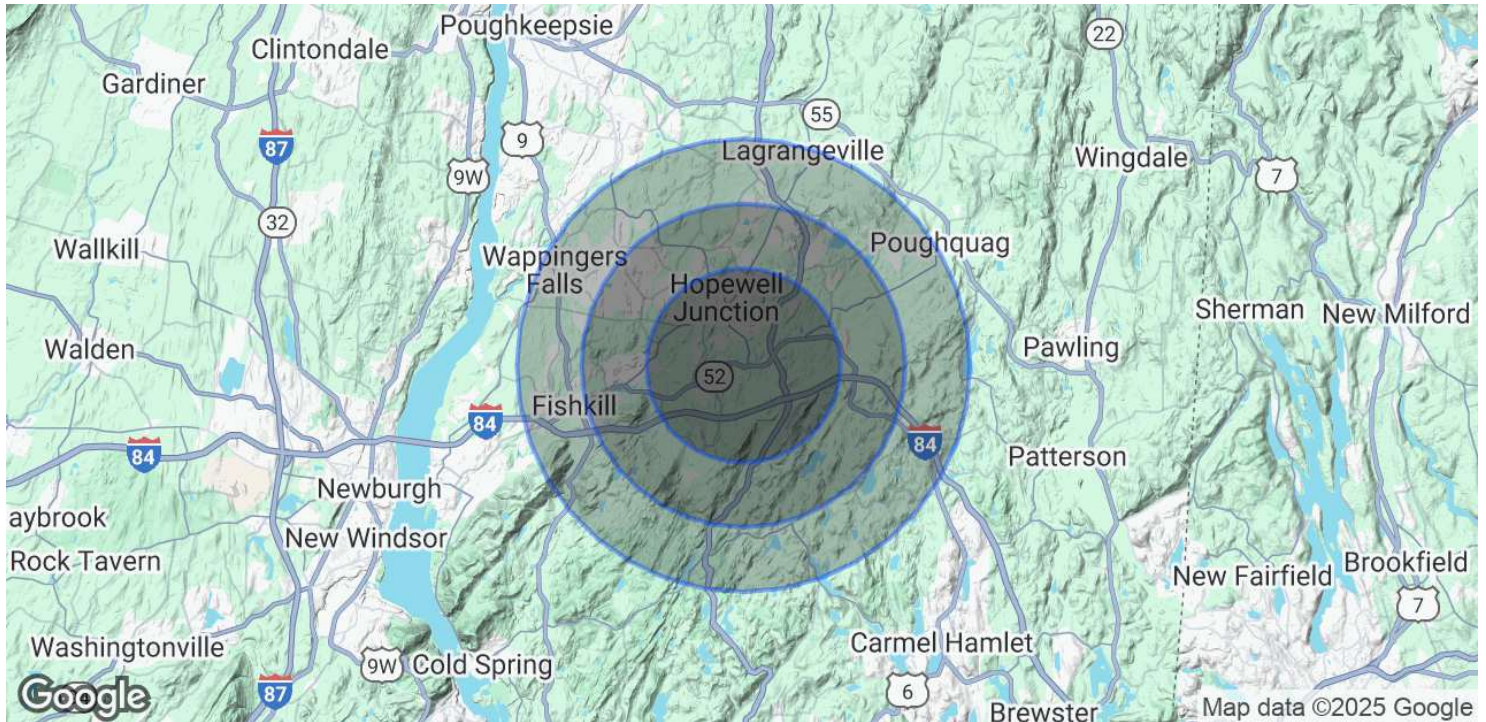
Thomas M. Cervone
845.485.3100
tom@crproperties.com



DEMOGRAPHICS & STATISTICS

POPULATION, HOUSEHOLD & INCOME

MID-HUDSON VALLEY REGION



POPULATION

	3 MILES	5 MILES	7 MILES
Total Population	14,163	48,910	85,486
Average Age	42	43	44
Average Age (Male)	41	42	43
Average Age (Female)	43	44	44

HOUSEHOLDS & INCOME

	3 MILES	5 MILES	7 MILES
Total Households	4,994	17,177	31,550
# of Persons per HH	2.8	2.8	2.7
Average HH Income	\$190,076	\$175,674	\$162,213
Average House Value	\$538,515	\$498,812	\$475,538

Demographics data derived from AlphaMap



CR Properties Group, LLC
295 Main Street
Poughkeepsie, NY 12601
www.crproperties.com



ALL DATA BELIEVED TO BE ACCURATE BUT NOT WARRANTED

For more information:

Thomas M. Cervone
845.485.3100
tom@crproperties.com