

# 37XX Lionel Road

MIMS, FL 32754

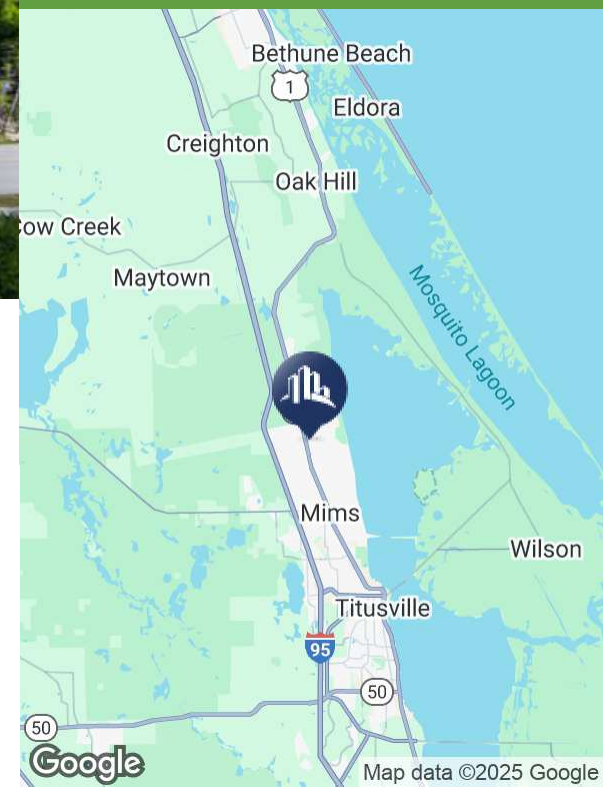
## FOR SALE

Listing Price \$350,000



### PROPERTY FEATURES

- "High and Dry" 4.77 acre parcel
- Easy access to water and utilities
- Access from paved road near US 1
- Can be divided to accommodate 3 lots
- Adjoining 2.28 acre parcel to the west also available.
- 3.33 acre parcel to the east just sold at full-price
- Across the street from highly rated Pinewood Elementary
- 7 miles to downtown Titusville
- 45 miles to downtown Orlando



FLINT & ASSOCIATES

FlintBrokers.com

**James Flint, CCIM**  
**PRESIDENT**  
321.252.9090  
james.flint@sperrycga.com  
FL #BK3313539

Each office independently owned and operated.

We obtained the information above from sources we believe to be reliable. However, we have not verified its accuracy and make no guarantee, warranty or representation about it. It is submitted subject to the possibility of errors, omissions, change of price, rental or other conditions, prior sale, lease or financing, or withdrawal without notice. We include projections, opinions, assumptions or estimates for example only, and they may not represent current or future performance of the property. You and your tax and legal advisors should conduct your own investigation of the property and transaction.

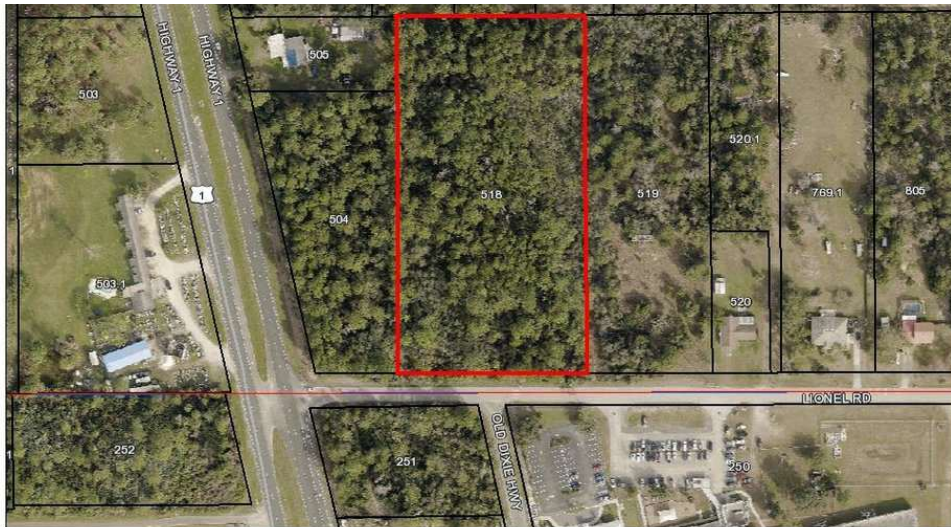


# 37XX Lionel Road

MIMS, FL 32754

## FOR SALE

Listing Price \$350000



**James Flint, CCIM**  
**PRESIDENT**  
321.252.9090  
james.flint@sperrycga.com  
FL #BK3313539

  
**SPERRY**  
FLINT & ASSOCIATES  
**FlintBrokers.com**

Each office independently owned and operated.

We obtained the information above from sources we believe to be reliable. However, we have not verified its accuracy and make no guarantee, warranty or representation about it. It is submitted subject to the possibility of errors, omissions, change of price, rental or other conditions, prior sale, lease or financing, or withdrawal without notice. We include projections, opinions, assumptions or estimates for example only, and they may not represent current or future performance of the property. You and your tax and legal advisors should conduct your own investigation of the property and transaction.