

NORTH RIVER COMMERCE CENTER

+/- 17,093 SF AVAILABLE FOR LEASE

8740 NW 102nd Street, Medley, Florida 33178



PROPERTY DESCRIPTION

North River Commerce Center consists of 11 tilt-up concrete dock-high buildings, perfect for distribution or manufacturing. With a minimum unit size of 5,000 square feet, fully air-conditioned office space, 20 - 24' clear ceilings, and 150' truck courts, **NRCC** provides functional industrial warehouse space within the Medley industrial market.

LOCATION DESCRIPTION

Situated on a major Highway such as Okeechobee Road, North River Commerce Center offers convenient access to all major thoroughfares and excellent frontage and exposure. Located on NW South River Drive between NW 89th Avenue and NW 87th Avenue. **NRCC** is only minutes from the Florida Turnpike and Palmetto Expressway via Okeechobee Road, which provides access to every highway and port in the county. Miami International Airport and PortMiami are accessible within minutes from Dolphin Expressway, Broward County, and Port Everglades from I-75 and I-95.

PROPERTY FEATURES

- +/- 17,093 Sq. Ft. Total Size
- +/- 810 Sq. Ft. Office
- +/- 16,283 Sq. Ft. Warehouse
- One (1) Loading Ramp
- Six (6) Dock High Loading Doors
- 20' Clear Ceiling Height
- 3 Phase | 150 AMPS | 120/208V
- Fully Fire Sprinkled Building
- Twin-T Roof Construction
- Ample Parking

MORE INFORMATION

Alexander Bernaldo, SIOR
President
786.337.7877
Alex@AmericasCRE.com

Michael Silva, SIOR
Vice President
786.337.7881
mike@americascre.com

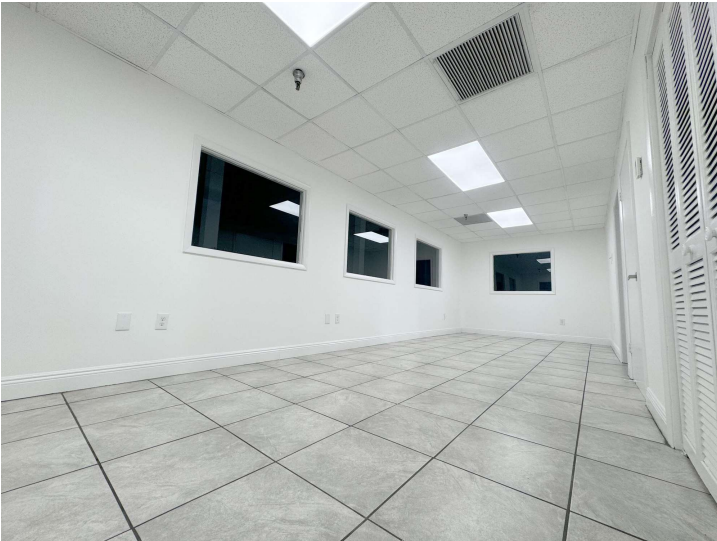
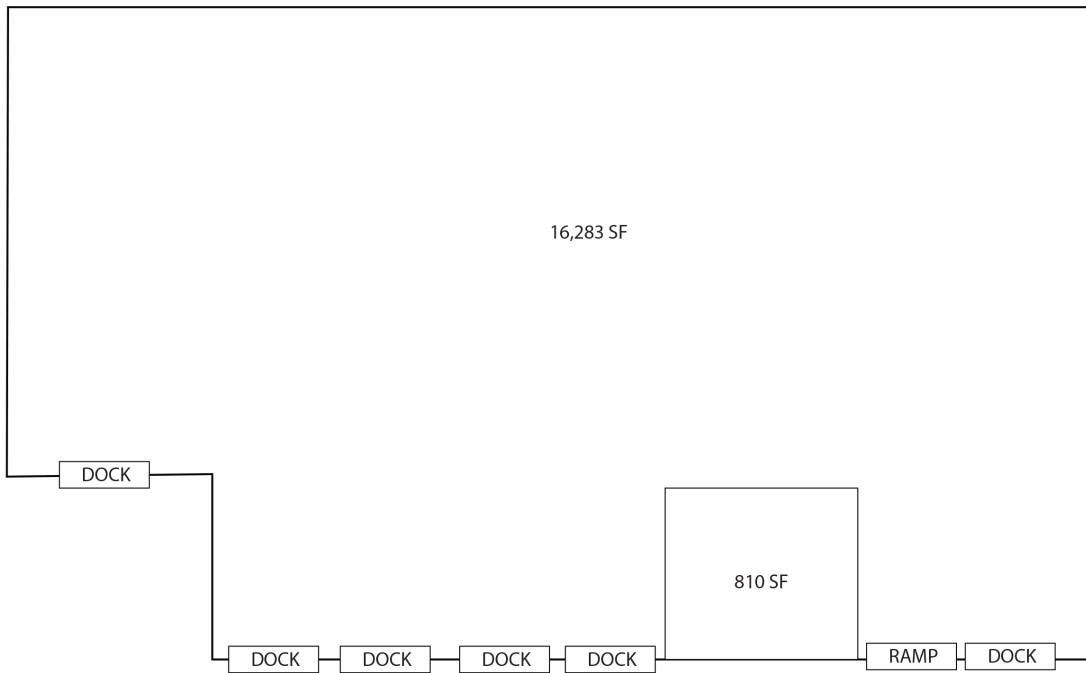
Marcel Perez
Commercial Advisor
786.337.7879
marcel@americasCRE.com



NORTH RIVER COMMERCE CENTER

17,093 SF AVAILABLE FOR LEASE

8740 NW 102nd Street, Medley, Florida 33178



MORE INFORMATION

Alexander Bernaldo, SIOR
President
786.337.7877
Alex@AmericasCRE.com

Michael Silva, SIOR
Vice President
786.337.7881
mike@americascre.com

Marcel Perez
Commercial Advisor
786.337.7879
marcel@americasCRE.com

