

STYROFOAM TRIM W/SMOOTH TEXTURE
STUCCO FINISH IN ACCENT COLOR

24 GAUGE SHUK-LOK STANDING SEAM
ROOF PANELS (TYPICAL)

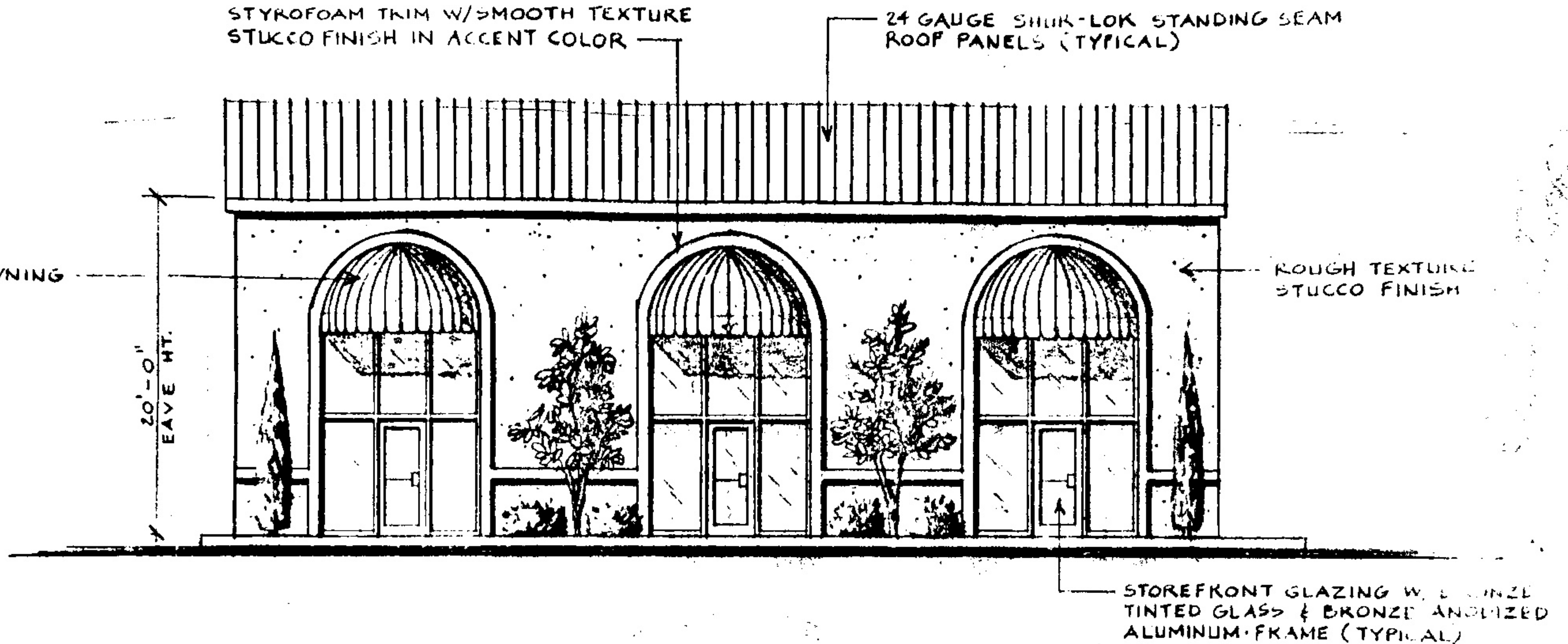
VINYL/CANVAS AWNING

ROUGH TEXTURE
STUCCO FINISH

20'-0"
EAVE HT.

STOREFRONT GLAZING W. BRONZE
TINTED GLASS & BRONZE ANODIZED
ALUMINUM FRAME (TYPICAL)

WEST ELEVATION SCALE: 1/8" = 1'-0"



404 TINTED WINDOW W/ BRONZE TINTED GLASS
2000 SERIES ANODIZED ALUMINUM FRAME (TYPICAL)

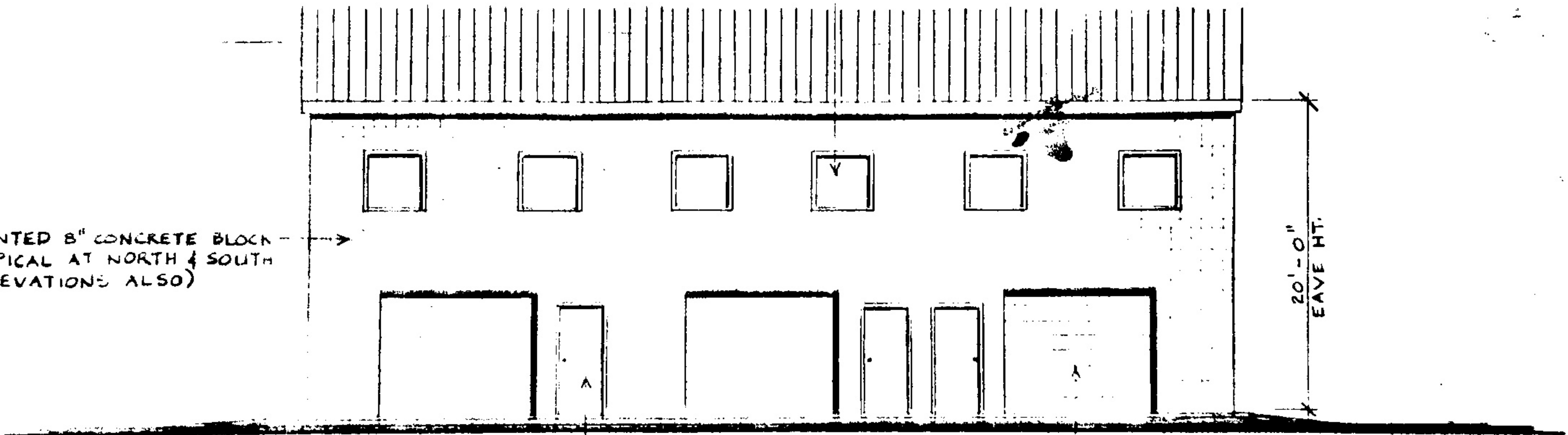
PAINTED 8" CONCRETE BLOCK
(TYPICAL AT NORTH & SOUTH
ELEVATIONS ALSO)

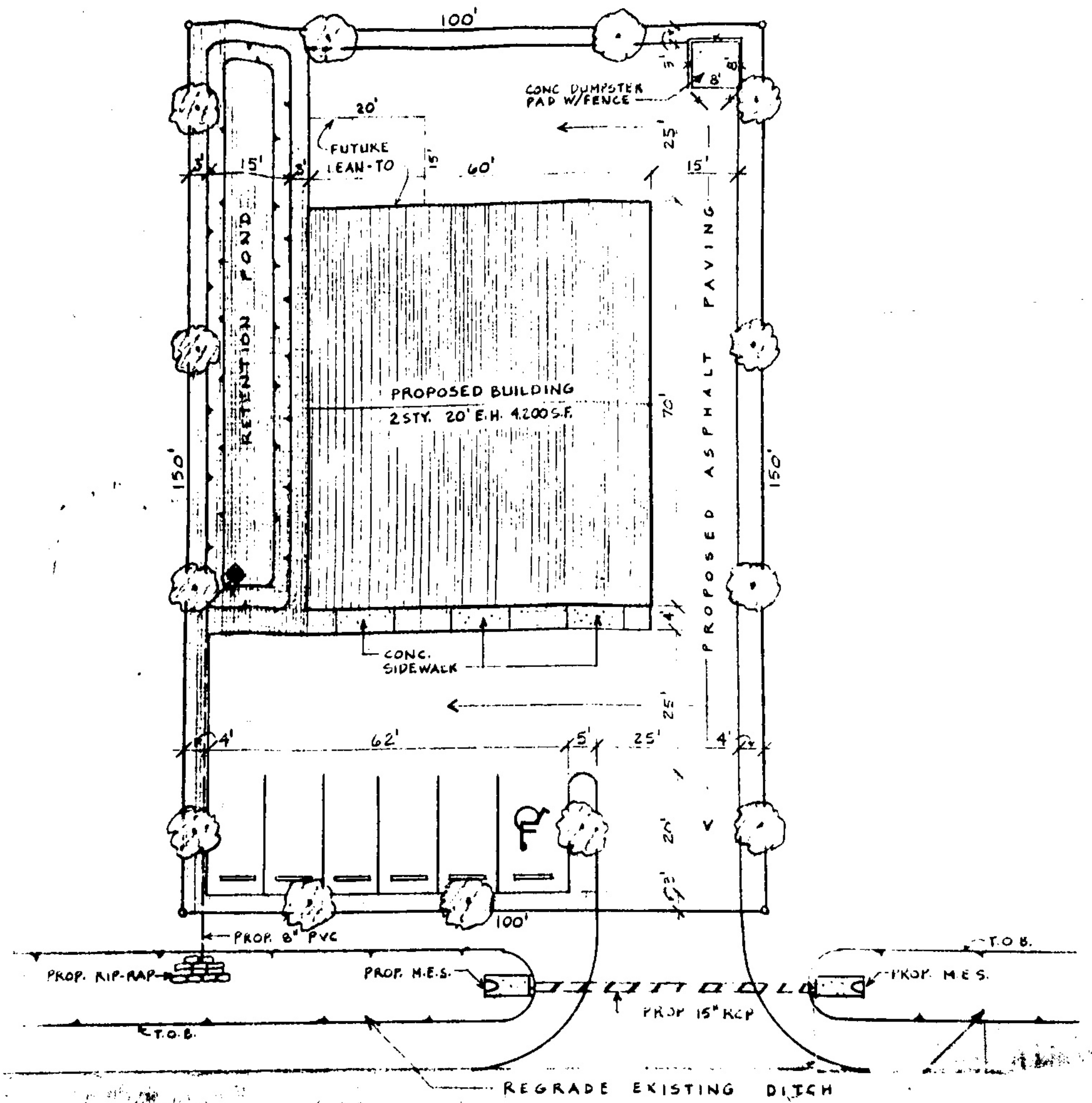
20'-0"
EAVE HT.

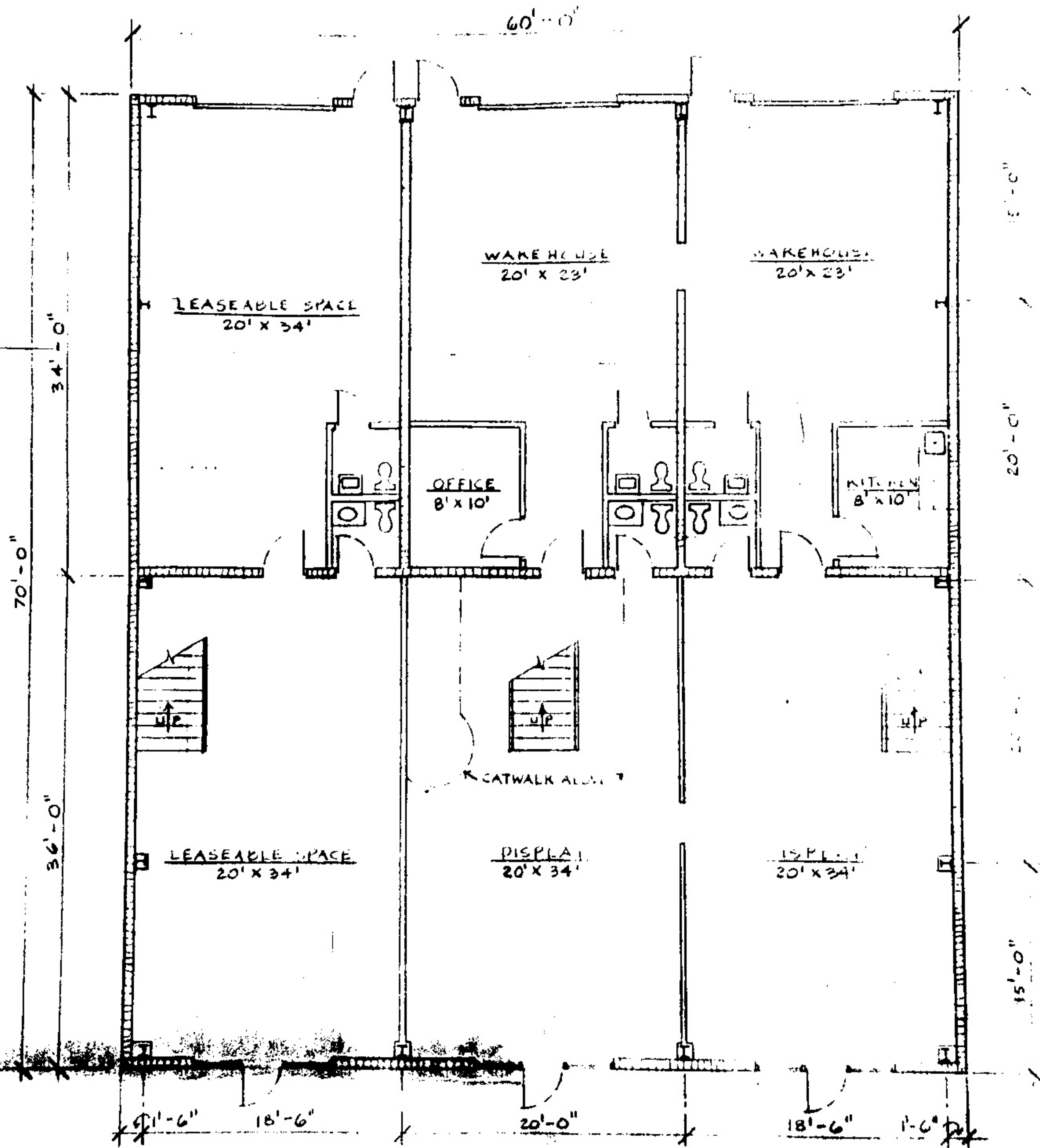
375 HOLLOW METAL
WALL PANEL (TYPICAL)

10' X 8' STEEL SECTIONAL
OVERHEAD DOOR (TYPICAL)

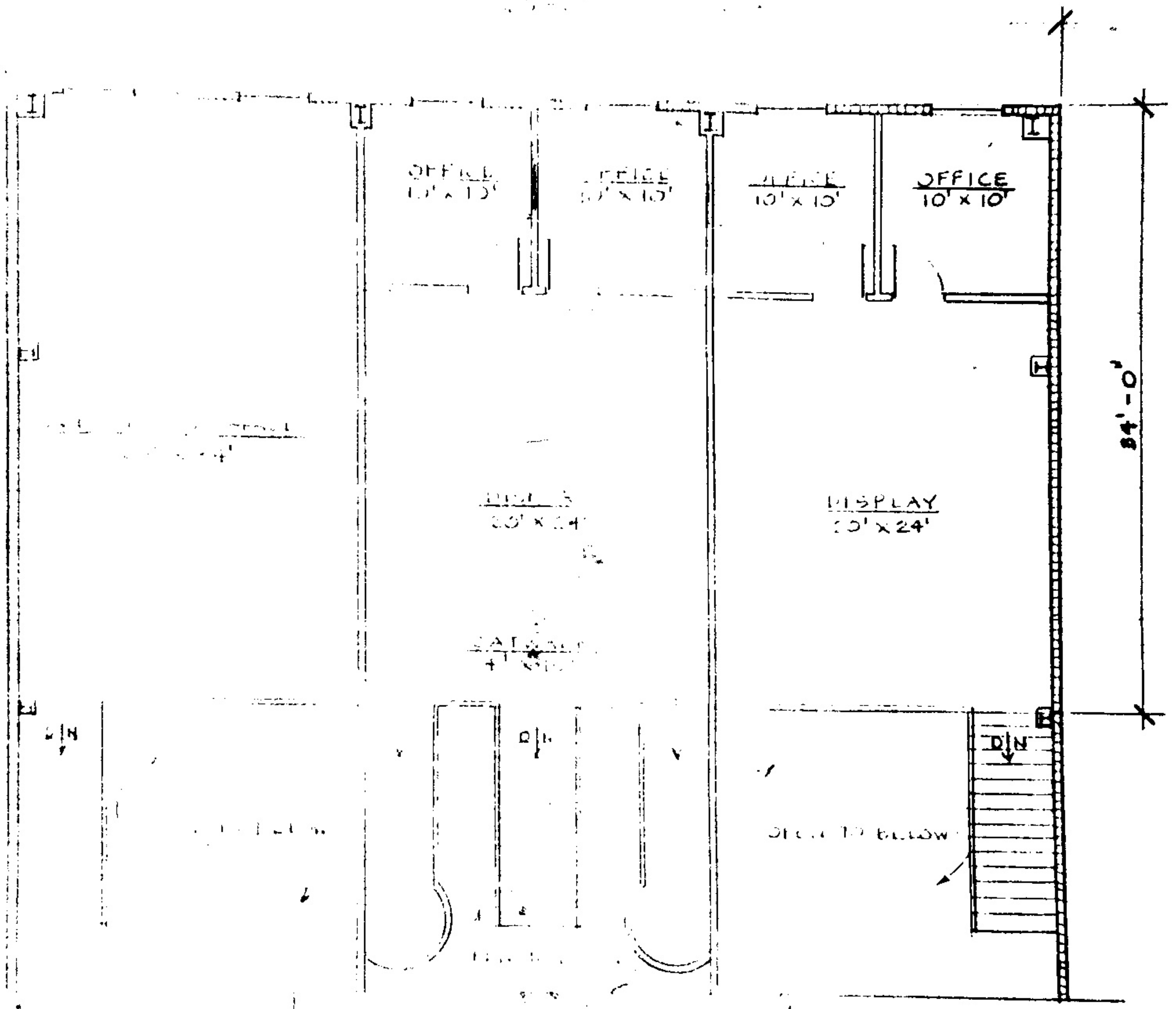
EAST ELEVATION SCALE 1/8" = 1'-0"







FIRST FLOOR PLAN SCALE: 1/8" = 1'-0"



SECOND FLOOR PLAN SCALE 1/8" = 1'-0"