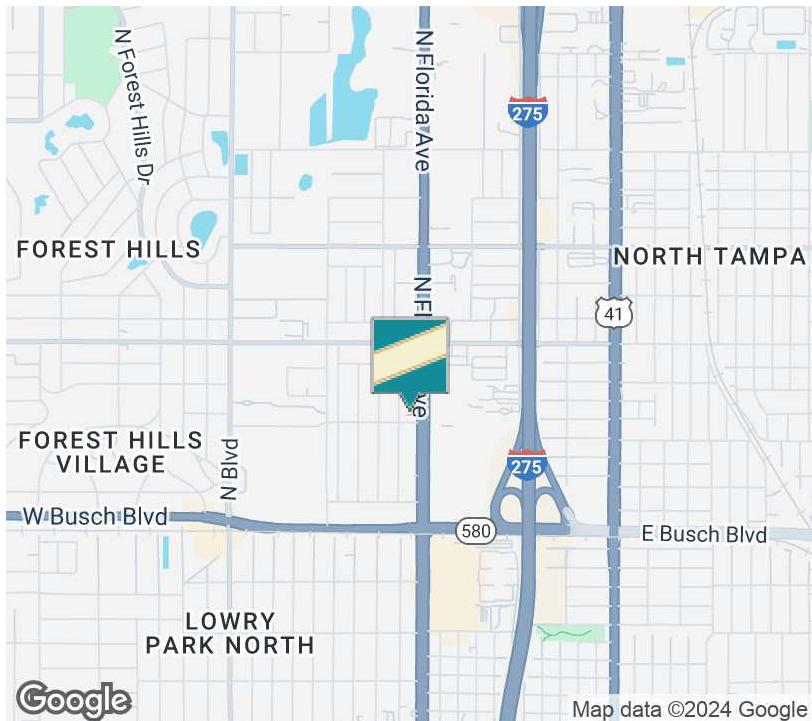




9502 N Florida Ave, Tampa, FL 33612

**EXECUTIVE SUMMARY**



**OFFERING SUMMARY**

<b>Sale Price:</b>	\$1,800,000
<b>Lot Size:</b>	0.89 Acres
<b>Year Built:</b>	1971 - Renovated 2022
<b>Building Size:</b>	5,695 SF heated plus 5,600 SF canopies
<b>Zoning:</b>	CI (Commercial Intensive)
<b>Market:</b>	Tampa Bay
<b>Business:</b>	Business may also be purchased

**PROPERTY OVERVIEW**

Prime Retail/Showroom/Auto dealership on highly trafficked Florida Ave minutes from Interstate I-275. Close to 6,000 SF of heated SF and almost 6,000 SF of canopy areas, for a total of apx 12,000 SF, on almost 1 acre (38,000 SF). Concrete Block Construction, 12 ft ceiling height, Former bank building, with vault, was retrofit to current use. Parking may be able to accommodate 90-100 vehicles.

Zoned CI- Commercial Intensive; allows many uses.  
New Roof- Apx 2020

The property offers a prime opportunity for Retail/Showroom/Office or Vehicle-related investors. Boasting a spacious 5,695 SF heated building plus 5,600 SF canopies, with showroom and offices and a kitchen/breakroom and 2 restrooms.

Additional tenant income of \$5,755/month with an apx 4,000 separate unit that is leased to a marketing company for office use (lease ends January 2026) with 9 offices, restroom and kitchen, that may be able to terminate early or buy-out if Buyer wishes to use this space.

This well-maintained property is ideally zoned CI to accommodate a variety of commercial ventures. Situated in the thriving Tampa area, this strategically positioned property presents abundant potential for businesses seeking a high-traffic location. With its impressive features and strategic location, this property stands ready to become the next successful hub for retail or vehicle-related endeavors in Tampa's dynamic commercial landscape. Built in 1971, and renovated in 2022, it stands as a solid investment for retail/office or vehicle-related businesses seeking a prominent presence in this dynamic commercial market.

Car dealership business may also be purchased.

**Kari L. Grimaldi/ Broker**

813.882.0884

kari@grimaldcommercialrealty.com

The information contained in this offering memorandum has been obtained from sources we believe reliable; however, Grimaldi Commercial Realty Corp. has not verified, and will not verify, any of the information contained herein, nor has Grimaldi Commercial Realty Corp. conducted any investigation regarding these matters and makes no warranty or representation whatsoever regarding the accuracy or completeness of the information provided. All potential buyers and tenants must take appropriate measures to verify all of the information set forth herein.



9502 N Florida Ave, Tampa, FL 33612

## COMPLETE HIGHLIGHTS

### SALE HIGHLIGHTS

- Busy Retail/Showroom/Auto Dealership on N Florida Ave
- 5,695 SF heated building and 5,600 SF canopies for a total of 11,294 SF
- Highly trafficked N. Florida Ave. minutes from Interstate I-275
- Built in 1971 and renovated in 2022
- Zoned CI (Commercial Intensive) (many retail and automotive uses)
- Solid Concrete Block Construction (retrofit from former Bank Building with vault)
- Additional lease income of \$5,755/mo for 1 unit of 4,000 SF with separate entrances (Buyer can take over if needed)
- Prime location in Tampa area
- New Roof apx 2020
- Perfect for Vehicle related business or any retail/showroom/office use
- Parking may accommodate 90-100 vehicles



### Kari L. Grimaldi/ Broker

813.882.0884

kari@grimaldicommercialrealty.com



9502 N Florida Ave, Tampa, FL 33612

## PROPERTY DESCRIPTION

### PROPERTY DESCRIPTION

Prime Retail/Showroom/Auto dealership on highly trafficked Florida Ave minutes from Interstate I-275. Close to 6,000 SF of heated SF and almost 6,000 SF of canopy areas, for a total of apx 12,000 SF, on almost 1 acre (38,000 SF). Concrete Block Construction, 12 ft ceiling height, Former bank building, with vault, was retrofitted to current use. Parking may be able to accommodate 90-100 vehicles.

Zoned CI- Commercial Intensive; allows many uses.  
New Roof- Apx 2020

The property offers a prime opportunity for Retail/Showroom/Office or Vehicle-related investors. Boasting a spacious 5,695 SF heated building plus 5,600 SF canopies, with showroom and offices and a kitchen/breakroom and 2 restrooms.

Additional tenant income of \$5,755/month with an apx 4,000 separate unit that is leased to a marketing company for office use (lease ends January 2026) with 9 offices, restroom and kitchen, that may be able to terminate early or buy-out if Buyer wishes to use this space.

This well-maintained property is ideally zoned CI to accommodate a variety of commercial ventures. Situated in the thriving Tampa area, this strategically positioned property presents abundant potential for businesses seeking a high-traffic location. With its impressive features and strategic location, this property stands ready to become the next successful hub for retail or vehicle-related endeavors in Tampa's dynamic commercial landscape. Built in 1971, and renovated in 2022, it stands as a solid investment for retail/office or vehicle-related businesses seeking a prominent presence in this dynamic commercial market.

Car dealership business may also be purchased.

### LOCATION DESCRIPTION

Located South of Busch Blvd and North of Linebaugh Ave. just minutes from Interstate I-275.

Situated in a bustling area, this location offers a strategic advantage for retail or vehicle-related businesses. A hotspot for commercial activity, the area is in close proximity to renowned landmarks like Busch Gardens Tampa Bay, providing a steady flow of visitors and potential customers. With easy access to major roadways and a diverse mix of businesses, the property embodies the essence of prime real estate. Embrace the opportunity to become part of this dynamic community and establish your retail or vehicle-related venture in the heart of Tampa's thriving commercial landscape.



**Kari L. Grimaldi/ Broker**

813.882.0884

kari@grimaldicommercialrealty.com



9502 N Florida Ave, Tampa, FL 33612

**PROPERTY DETAILS**

Sale Price	<b>\$1,800,000</b>
------------	--------------------

**PROPERTY INFORMATION**

Property Type	Retail
Property Subtype	Vehicle Related
Zoning	CI
Lot Size	38,226 SF
APN #	99670.0000
Parking	Parking may accommodate 90-100 vehicles

**LOCATION INFORMATION**

Building Name	Prime Retail/Showroom/Auto Dealership on High Traffic Florida Ave- Tampa, FL
Street Address	9502 N Florida Ave
City, State, Zip	Tampa, FL 33612
County	Hillsborough

**BUILDING INFORMATION**

Building Size	5,695 SF
Number of Floors	1
Year Built	1971/ Renovated in 2022 New Roof apx 2020
Number of Buildings	1

**Kari L. Grimaldi/ Broker**

813.882.0884

kari@grimaldicommercialrealty.com

The information contained in this offering memorandum has been obtained from sources we believe reliable; however, Grimaldi Commercial Realty Corp. has not verified, and will not verify, any of the information contained herein, nor has Grimaldi Commercial Realty Corp. conducted any investigation regarding these matters and makes no warranty or representation whatsoever regarding the accuracy or completeness of the information provided. All potential buyers and tenants must take appropriate measures to verify all of the information set forth herein.



9502 N Florida Ave, Tampa, FL 33612

**ADDITIONAL PHOTOS**



**Kari L. Grimaldi/ Broker**

813.882.0884

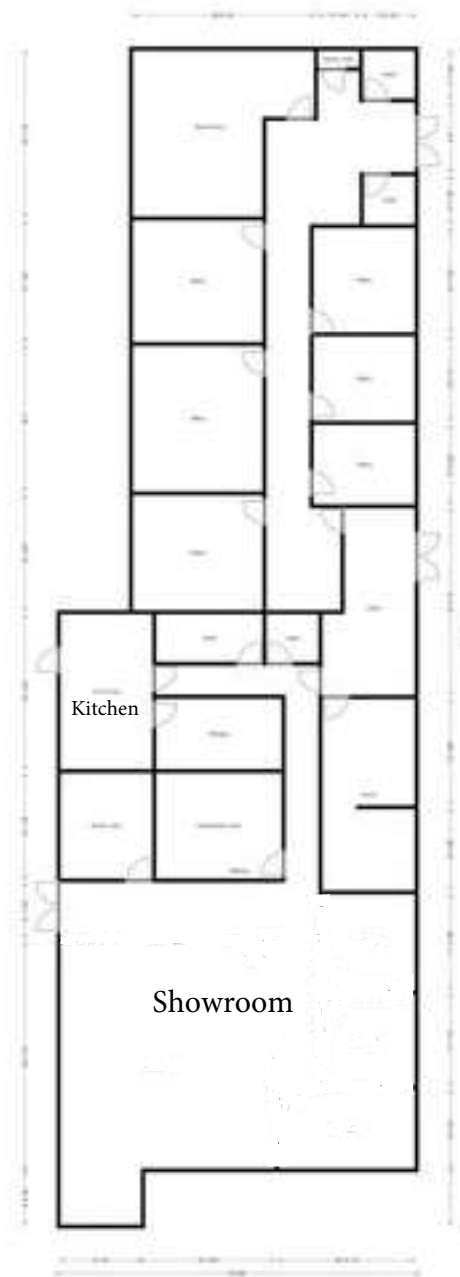
kari@grimaldcommercialrealty.com

The information contained in this offering memorandum has been obtained from sources we believe reliable; however, Grimaldi Commercial Realty Corp. has not verified, and will not verify, any of the information contained herein, nor has Grimaldi Commercial Realty Corp. conducted any investigation regarding these matters and makes no warranty or representation whatsoever regarding the accuracy or completeness of the information provided. All potential buyers and tenants must take appropriate measures to verify all of the information set forth herein.



9502 N Florida Ave, Tampa, FL 33612

## FLOORPLAN



**Kari L. Grimaldi/ Broker**

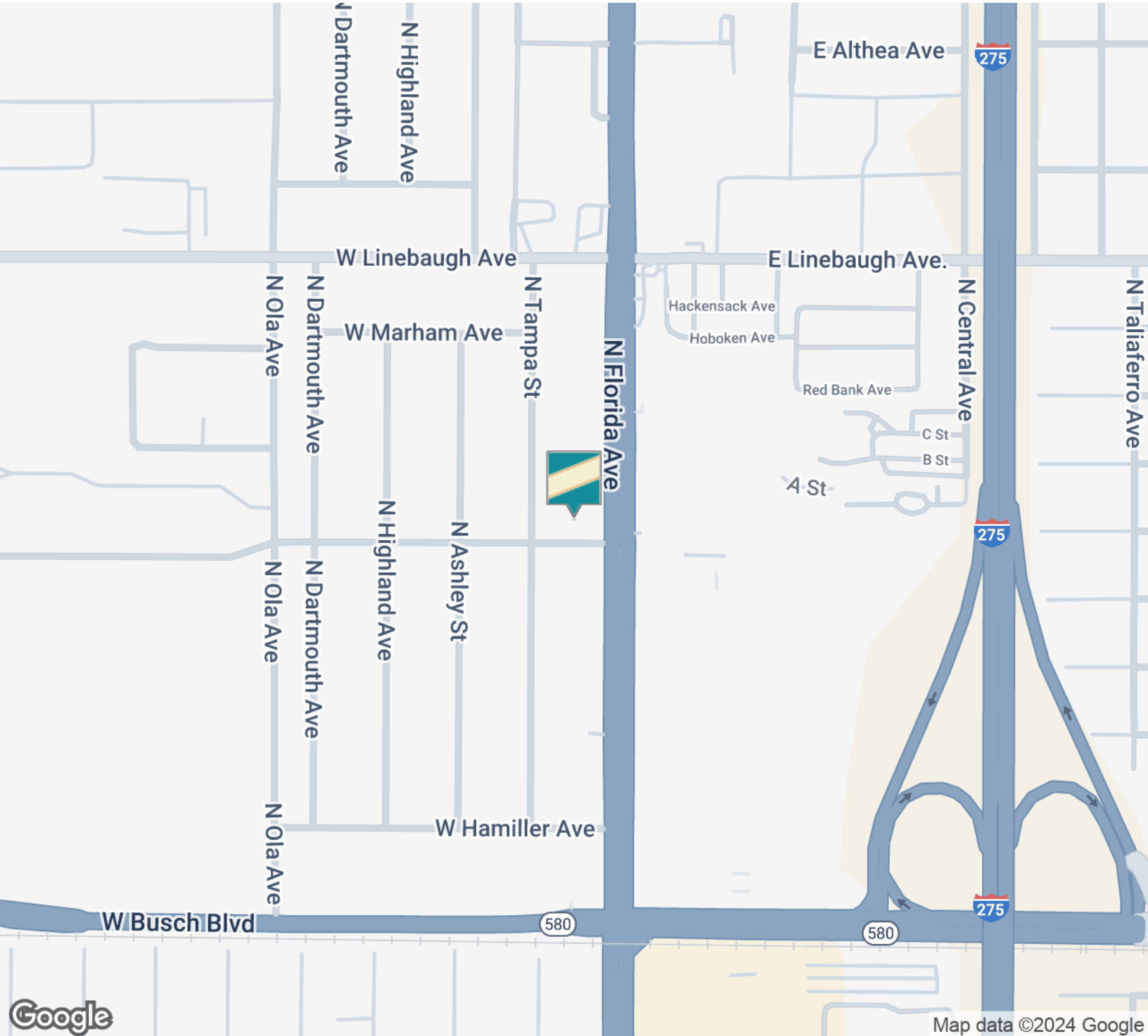
813.882.0884

kari@grimaldicommercialrealty.com



9502 N Florida Ave, Tampa, FL 33612

LOCATION MAP



**Kari L. Grimaldi/ Broker**

813.882.0884

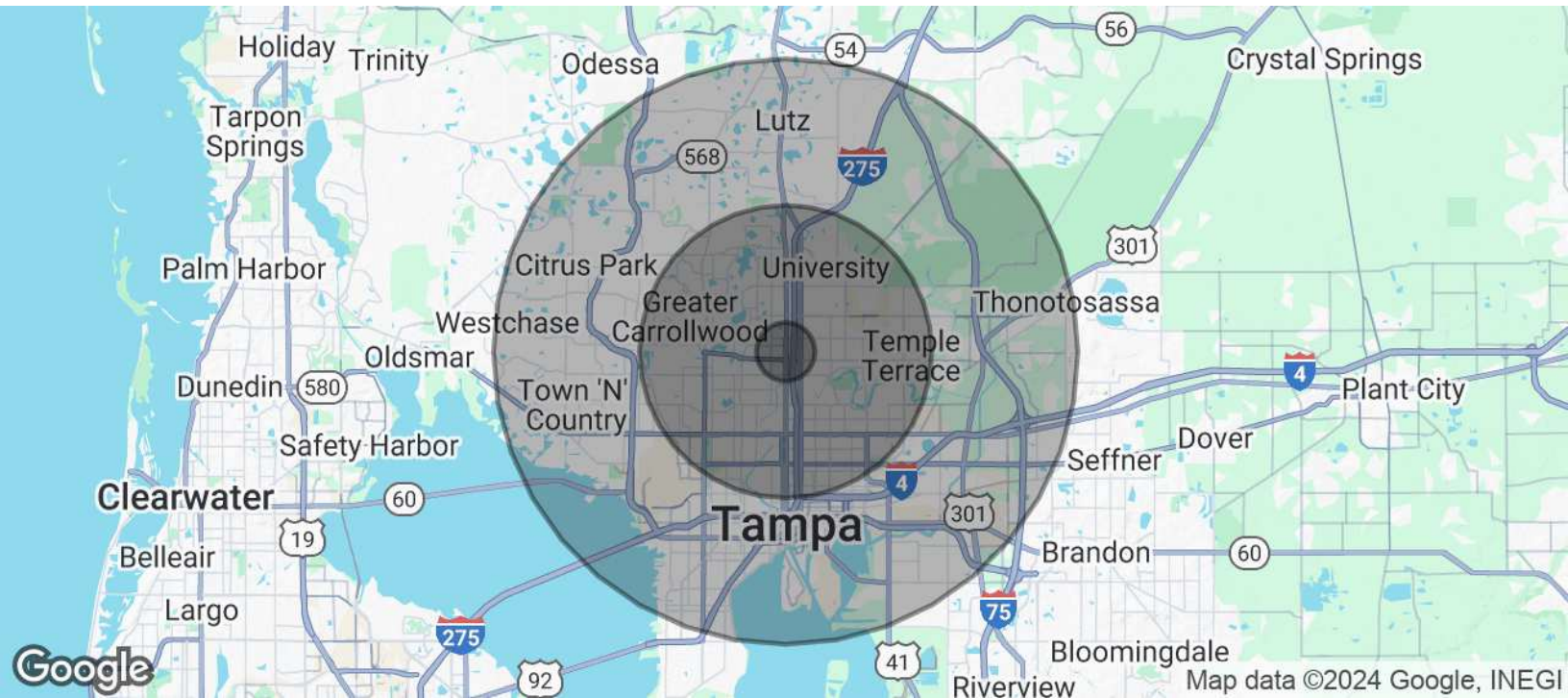
kari@grimaldicommercialrealty.com

The information contained in this offering memorandum has been obtained from sources we believe reliable; however, Grimaldi Commercial Realty Corp. has not verified, and will not verify, any of the information contained herein, nor has Grimaldi Commercial Realty Corp. conducted any investigation regarding these matters and makes no warranty or representation whatsoever regarding the accuracy or completeness of the information provided. All potential buyers and tenants must take appropriate measures to verify all of the information set forth herein.



9502 N Florida Ave, Tampa, FL 33612

DEMOGRAPHICS MAP & REPORT



POPULATION	1 MILE	5 MILES	10 MILES
Total Population	16,844	348,448	792,091
Average Age	37.9	36.3	37.6
Average Age (Male)	34.3	34.8	36.5
Average Age (Female)	41.7	37.9	38.8

HOUSEHOLDS & INCOME	1 MILE	5 MILES	10 MILES
Total Households	6,203	145,183	332,181
# of Persons per HH	2.7	2.4	2.4
Average HH Income	\$45,696	\$55,145	\$76,229
Average House Value	\$116,973	\$160,651	\$239,996

2020 American Community Survey (ACS)

Kari L. Grimaldi/ Broker

813.882.0884

kari@grimaldicommercialrealty.com

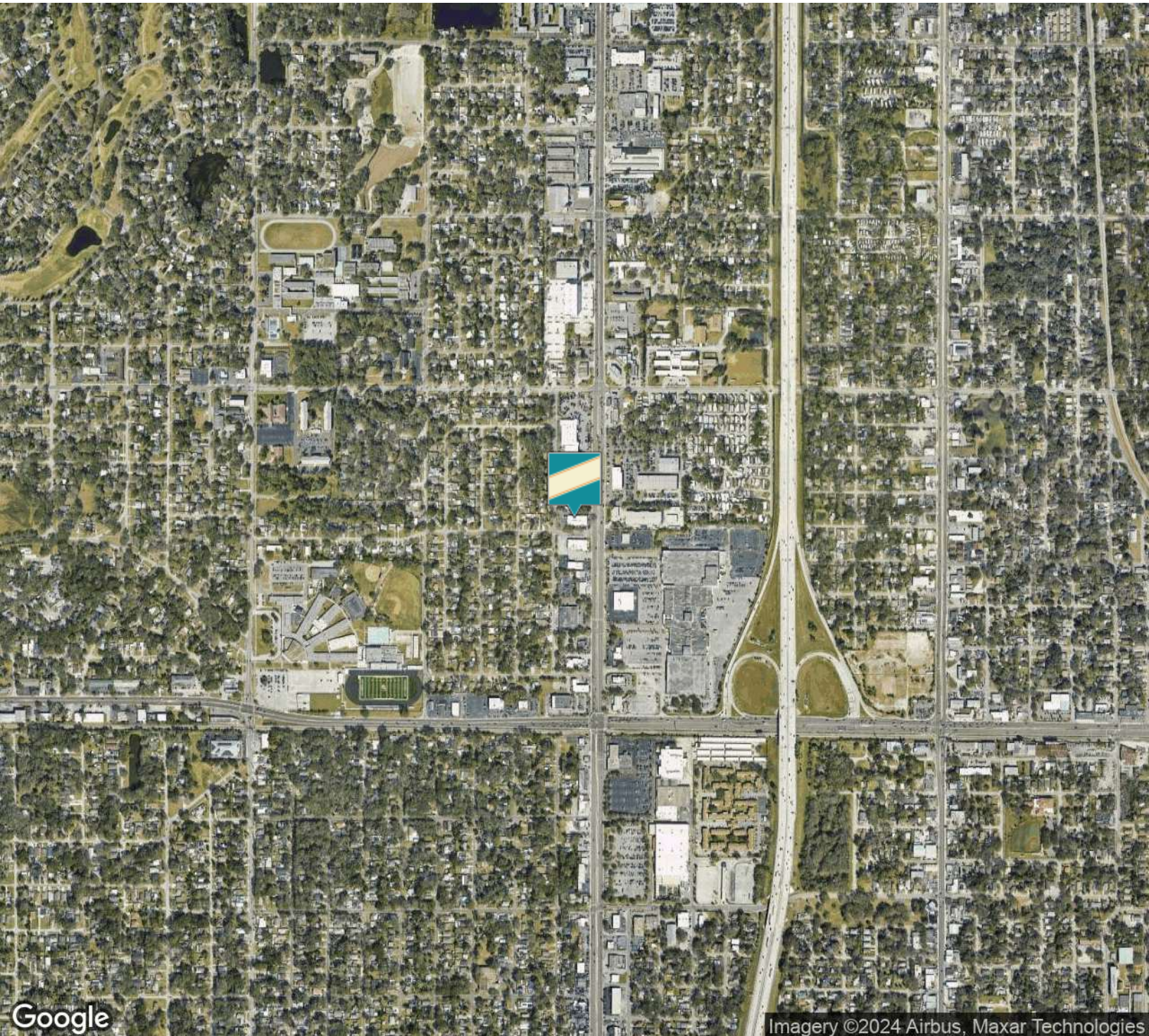
The information contained in this offering memorandum has been obtained from sources we believe reliable; however, Grimaldi Commercial Realty Corp. has not verified, and will not verify, any of the information contained herein, nor has Grimaldi Commercial Realty Corp. conducted any investigation regarding these matters and makes no warranty or representation whatsoever regarding the accuracy or completeness of the information provided. All potential buyers and tenants must take appropriate measures to verify all of the information set forth herein.





9502 N Florida Ave, Tampa, FL 33612

**AERIAL MAP**



**Kari L. Grimaldi/ Broker**

813.882.0884

kari@grimaldicommercialrealty.com

The information contained in this offering memorandum has been obtained from sources we believe reliable; however, Grimaldi Commercial Realty Corp. has not verified, and will not verify, any of the information contained herein, nor has Grimaldi Commercial Realty Corp. conducted any investigation regarding these matters and makes no warranty or representation whatsoever regarding the accuracy or completeness of the information provided. All potential buyers and tenants must take appropriate measures to verify all of the information set forth herein.



9502 N Florida Ave, Tampa, FL 33612

## ADVISOR BIO & CONTACT 1

### KARI L. GRIMALDI/ BROKER

President



115 W Bearss Ave  
Tampa, FL 33613  
T 813.882.0884  
C 813.376.3386  
kari@grimaldcommercialrealty.com  
FL #BK3076744

### PROFESSIONAL BACKGROUND

Kari Grimaldi is the Managing Broker/President of Grimaldi Commercial Realty Corp. and commercial real estate expert. Kari quickly climbed the ranks of who's who in Tampa Bay Area Commercial Real Estate to become a Top Producer. Learning and joining the family business at an early age, Kari understands the importance of networking and building relationships, and has accumulated 20+ years of experience and in-depth knowledge to execute and navigate commercial real estate transactions for Sellers, Buyers, and Landlords/Tenants from inception to closing. Kari has an extensive resume with some of the highlights listed below:

Multiple Year Crexi Platinum Broker Award Winner

Areas of Expertise:

Office and Build-to-Suit Sales & Leasing  
Medical Office Sales  
Retail Sales  
Industrial Sales  
Multifamily Investments  
Single NNN National Investments  
Land & Commercial Development  
Foreign Investors & Investment Specialist  
Seller Finance and Creative Financing  
1031 & Reverse Exchanges  
Short Sales & Distressed/Bank-owned assets

As a commercial real estate owner and investor herself, Kari knows first hand how to guide others through the process, and negotiate and close transactions successfully. Kari has a vast portfolio of closed transactions in all sectors of the commercial market, and is a multi-million dollar sales producer.

### EDUCATION

A Florida native, Kari earned her Bachelors at University of Florida in Management and Psychology, and a Masters at University of South Florida. A consummate professional, Kari is continually educating herself on the latest economic and market trends with continuing education, seminars and networking.

### MEMBERSHIPS & AFFILIATIONS

REIC Member- Real Estate Investment Council  
CCIM Candidate- Certified Commercial Investment Member  
ICSC Member- International Council of Shopping Centers

### Kari L. Grimaldi/ Broker

813.882.0884

kari@grimaldcommercialrealty.com