



# DEVELOPMENT SITE

NYS ROUTE 300, TEMPLE HILL ROAD NEW WINDSOR, NY 12553



## MID-SIZE BOX, HEAVY COMMERCIAL, OUTDOOR STORAGE

**ADDRESS:** NYS Route 300  
Temple Hill Road  
New Windsor, NY 12553

**LOCATION:** NYS Route 17K  
(4 Minutes / 2.5 Miles)  
Interstate 87, Exit 17  
(7 Minutes / 3.5 Miles)  
Interstate 84, Exit 36  
(7 Minutes / 3.4 Miles)  
Newburgh-Beacon Bridge  
(12 Minutes / 6.5 Miles)

**LOT SIZE:** 5.6 Acres

**FRONTAGE:** 200'+ on Temple Hill Road

**ZONING:** LC, Limited Commercial

**ASKING PRICE:** \$1,295,000



### PROPERTY OVERVIEW

CR Properties Group is pleased to offer a development site for sale on NYS Route 300, Temple Hill Road, New Windsor, NY. NYS Route 17K is 4 minutes away, Interstate 87 (Exit 17) is 7 minutes, Interstate 84 (Exit 36) is 7 minutes away, and the Newburgh-Beacon Bridge is 12 minutes away. This lot is 5.6 acres with more than 200' on frontage on Temple Hill Road and zoned LC which has suitable uses retail stores, banks, service establishments, and more.



CR Properties Group, LLC  
295 Main Street  
Poughkeepsie, NY 12601  
[www.crproperties.com](http://www.crproperties.com)



ALL DATA BELIEVED TO BE ACCURATE BUT NOT WARRANTED

For more information:

Thomas M. Cervone  
845.485.3100

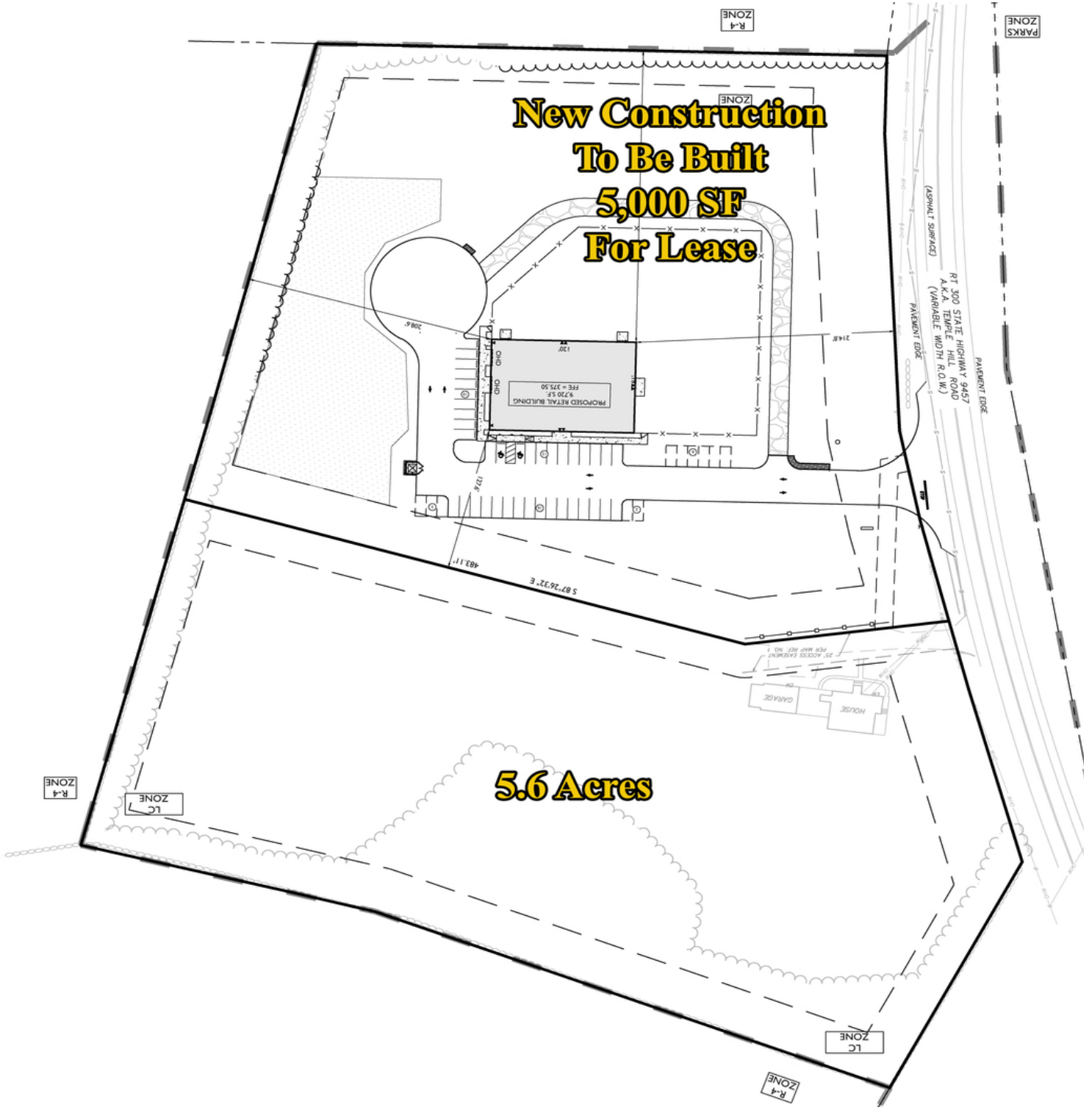
[tom@crproperties.com](mailto:tom@crproperties.com)



# SITE PLAN - DIVIDED PARCELS

NYS ROUTE 300, TEMPLE HILL ROAD NEW WINDSOR, NY 12553

FULL PLANS AVAILABLE UPON REQUEST



CR Properties Group, LLC  
 295 Main Street  
 Poughkeepsie, NY 12601  
[www.crproperties.com](http://www.crproperties.com)



ALL DATA BELIEVED TO BE ACCURATE BUT NOT WARRANTED

For more information:  
 Thomas M. Cervone  
 845.485.3100  
[tom@crproperties.com](mailto:tom@crproperties.com)





# DEMAND GENERATORS & AREA RETAILERS

MOUNT SAINT MARY COLLEGE, SUNY EMPIRE, TEMPLE HILL ACADEMY

## STEWART INTERNATIONAL AIRPORT, I84, I87



CR Properties Group, LLC  
295 Main Street  
Poughkeepsie, NY 12601  
www.crproperties.com



ALL DATA BELIEVED TO BE ACCURATE BUT NOT WARRANTED

For more information:  
Thomas M. Cervone  
845.485.3100  
tom@crproperties.com

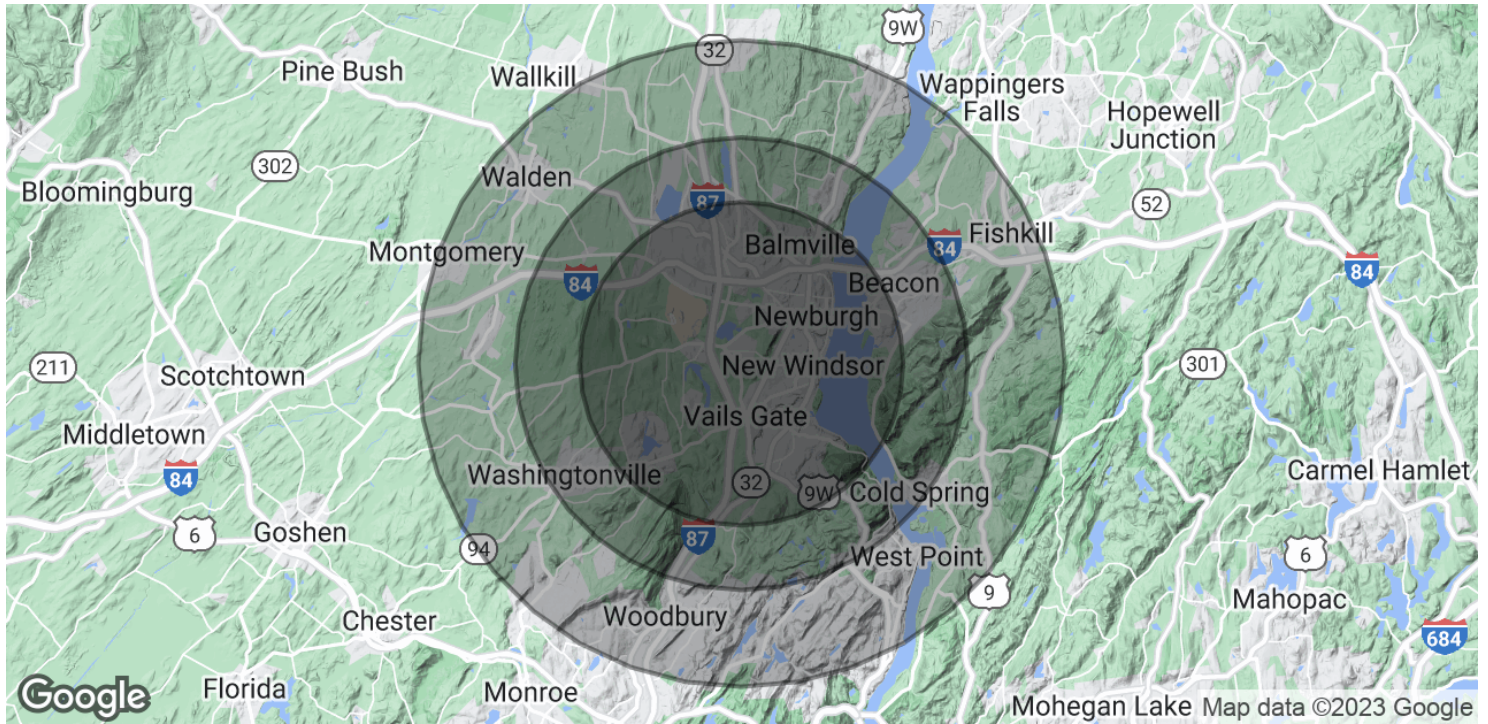




# DEMOGRAPHICS & STATISTICS

## POPULATION, HOUSEHOLD & INCOME

### MID-HUDSON VALLEY REGION



#### POPULATION

	5 MILES	7 MILES	10 MILES
Total Population	87,089	129,180	204,077
Average Age	38.4	39.2	39.1
Average Age (Male)	36.2	37.2	37.2
Average Age (Female)	41.4	41.0	40.4

#### HOUSEHOLDS & INCOME

	5 MILES	7 MILES	10 MILES
Total Households	36,108	52,214	81,166
# of Persons per HH	2.4	2.5	2.5
Average HH Income	\$82,440	\$90,010	\$92,659
Average House Value	\$216,954	\$251,791	\$261,655

\* Demographic data derived from 2020 ACS - US Census



CR Properties Group, LLC  
295 Main Street  
Poughkeepsie, NY 12601  
www.crproperties.com



ALL DATA BELIEVED TO BE ACCURATE BUT NOT WARRANTED

For more information:

Thomas M. Cervone  
845.485.3100  
tom@crproperties.com