

A Profile of Bisbee

Bisbee is a small, isolated border community only 10 miles from the Mexican border. The cultural diversity within the community is unusual for the US, for 30 different nationalities once worked in the copper mines, and descendants of these original inhabitants are still living in the town. This old mining community included a large Hispanic element, and has been supplemented over the past few decades with an influx of a mixture of retirees and artists looking for a more relaxed life in the warmth of southern Arizona and the relative geographical isolation of the Mule Mountains. Bisbee lies one mile high above the surrounding desert, with panoramic views down to Mexico, across the valley to Sierra Vista on one side and Douglas and the Sulphur Springs Valley on the other.

The Continental Divide runs through the mountains on the road to Sierra Vista, separating the eastern watershed of the US from the west. The Sonoran and the Chihuahuan deserts also come together here. Geographically, the location is as varied as its inhabitants, and is blessed with such mineral wealth that the town became known as the Queen of the Mining Camps at the end of the last century. Not only was copper extracted from the hills around town, but gold, silver, malachite, turquoise, azurite were also found in abundance. Mines and wildcat diggings dotted the hillsides, and changed the face of the town and its outlying districts permanently. Some of the inhabitants even went at it, pick and shovel, underneath their houses, which led to the collapse of one or two buildings as a result of hidden tunneling. This mineral wealth made Bisbee, like neighboring Tombstone, into a flamboyant boomtown, one of the early metropolises of the West, and the biggest city between St. Louis and San Francisco.

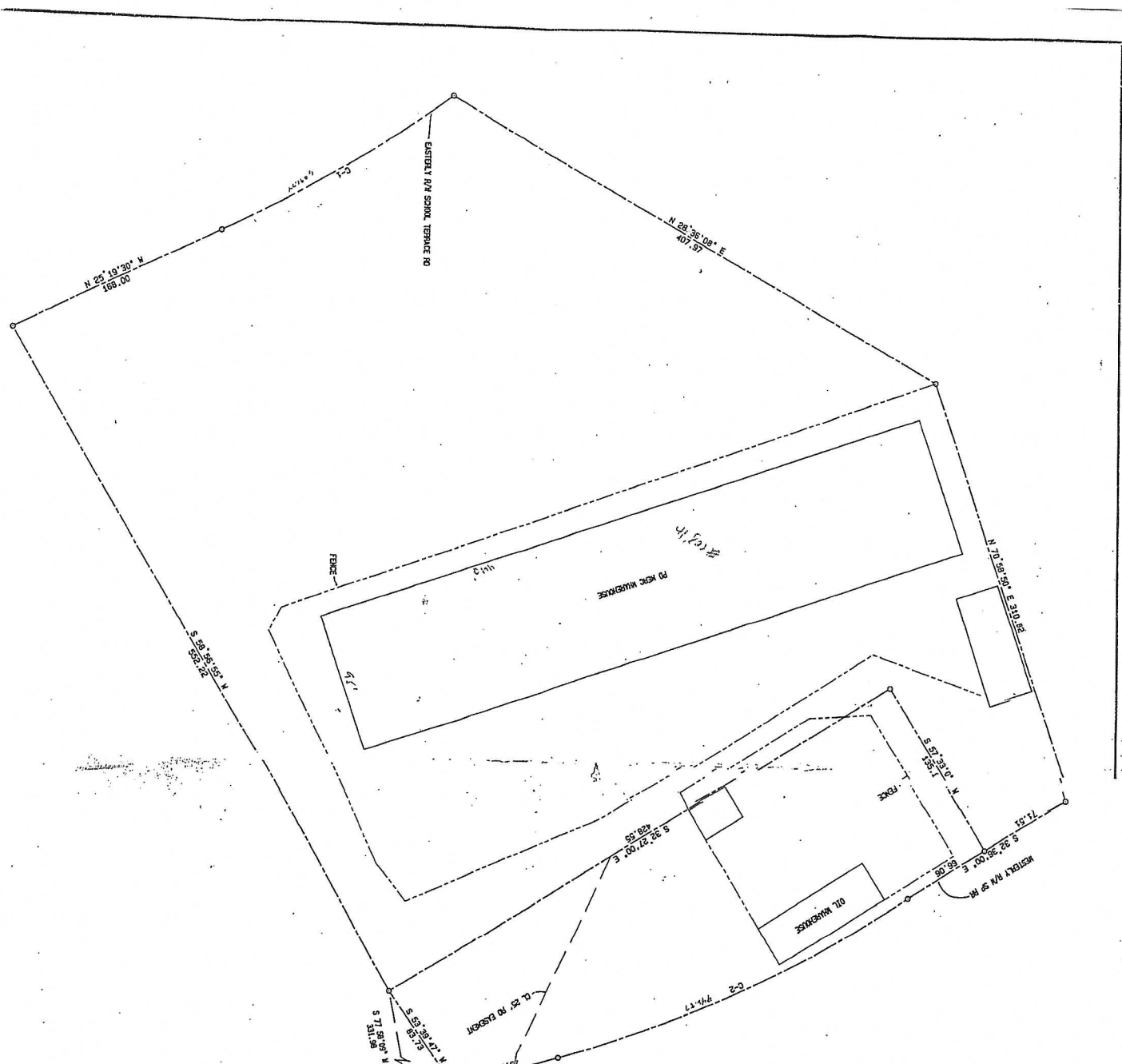
At the turn of the century, Bisbee boasted 20,000 inhabitants. The saloons, gambling establishments and whorehouses (cribs), which were jammed into the Brewery Gulch, as it came to be known, were notorious throughout the West, attracting an array of visitors to the town. Brewery Gulch even boasted its own Stock Market Exchange. The original blackboard for chalking up quotes can still be seen today in the Brewery bar. Like Tombstone, the establishments vied to take the money out of the miners' pockets day and night, 7 days a week, 52 weeks a year. Unlike Tombstone, Bisbee has not "gussied up" its historic district or used myth and legend to sell its image. As a result, Bisbee remains a much more authentic witness of bygone times, a town complete with charm and not a few surprises tucked away in the hills.

The majority of Bisbee houses date from the heyday period of the mines from 1890 to 1920. Because of this, the visual appearance of Bisbee can best be described as “antique” or “charming”. The crowded main street reminds one more of a European shopping street than an American one. The pace is relaxed, a far cry from the freewheeling buy-and-sell-mentality of Sierra Vista’s mall and shopping centers.

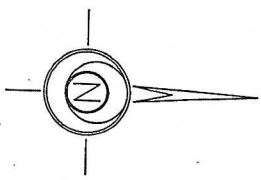
The Bisbee buildings are crowded onto the hillsides, and are angled up crazy steps, propped up on stilts, ranging in size from the magnificently theatrical to little more than jerry-rigged hovels. Each building reveals individual charm or a few details unique to Bisbee homes. Some of the houses are historical jewels, complete with grand pillared fireplaces, chandeliers and spacious ballrooms. One old building in town even sports a “horse elevator”, used to transport quadrupeds to their berths in the “horse hotel” in the upper story. The town is spread out into several unique communities, which popped up where the mines were situated. As a result, Warren is a planned community with the lazy insouciance of older American residential street, while Old Bisbee’s chaotic jumble of houses attracts artists and foreigners seeking the unusual. San Jose is a more modern community, complete with shopping center and suburban homes in bungalow style. Tintown, on the other hand, houses a large Mexican community, complete with chickens and house gardens. The geographical isolation of the town has proved both a curse and a blessing for Bisbee's residents. Locals jokingly call the Mule Pass Tunnel the Time Tunnel, and say that all who go through it come out into another time zone. For those with an independent income, living in Bisbee is an excellent way to retreat from the hectic hustle-bustle and criminality of mainstream America. For those who have to make a living, it can be a drawback.

One of the advantages of living in Bisbee is that it is a retreat that also offers other possibilities within a short distance if life gets too quiet. Douglas has often been termed an American Mexican town, complete with the aging splendor of the historic Gadsden Hotel. Sierra Vista is a booming shopping community, Willcox a cowboy and rancher’s town, Tombstone caters to Old West tourists, and big city life is not too far away in Tucson. Spectacular natural beauties such as Kartchner Caverns, the Chiricahua Mountains and the birding paradises of the San Pedro River and Sulphur Springs Valley attract the naturalist, and a quick trip to Mexico by car is always possible. Despite its small size, Bisbee boasts of several community projects and interest groups. Community choirs, dance and art initiatives, a Women’s Club, a well stocked library and a public swimming pool are some of the attractions. Annual events include the Brewery Gulch Daze, the 1000 stair race and a bicycle race LaVuelta.

Many visitors experience a wave of nostalgia for times gone by and they think they have found a relic of this past in Bisbee, the village that time forgot.



Curve No.	Radius	Delta	Length	Tangent	Chord
1	1081.74	010 14 00	134.59	57.75	N 30 25 30 W 134.73
2	941.07	017 10 35	202.05	142.40	N 85 02 19 W 201.69



7-1/2" x 8" ACRES



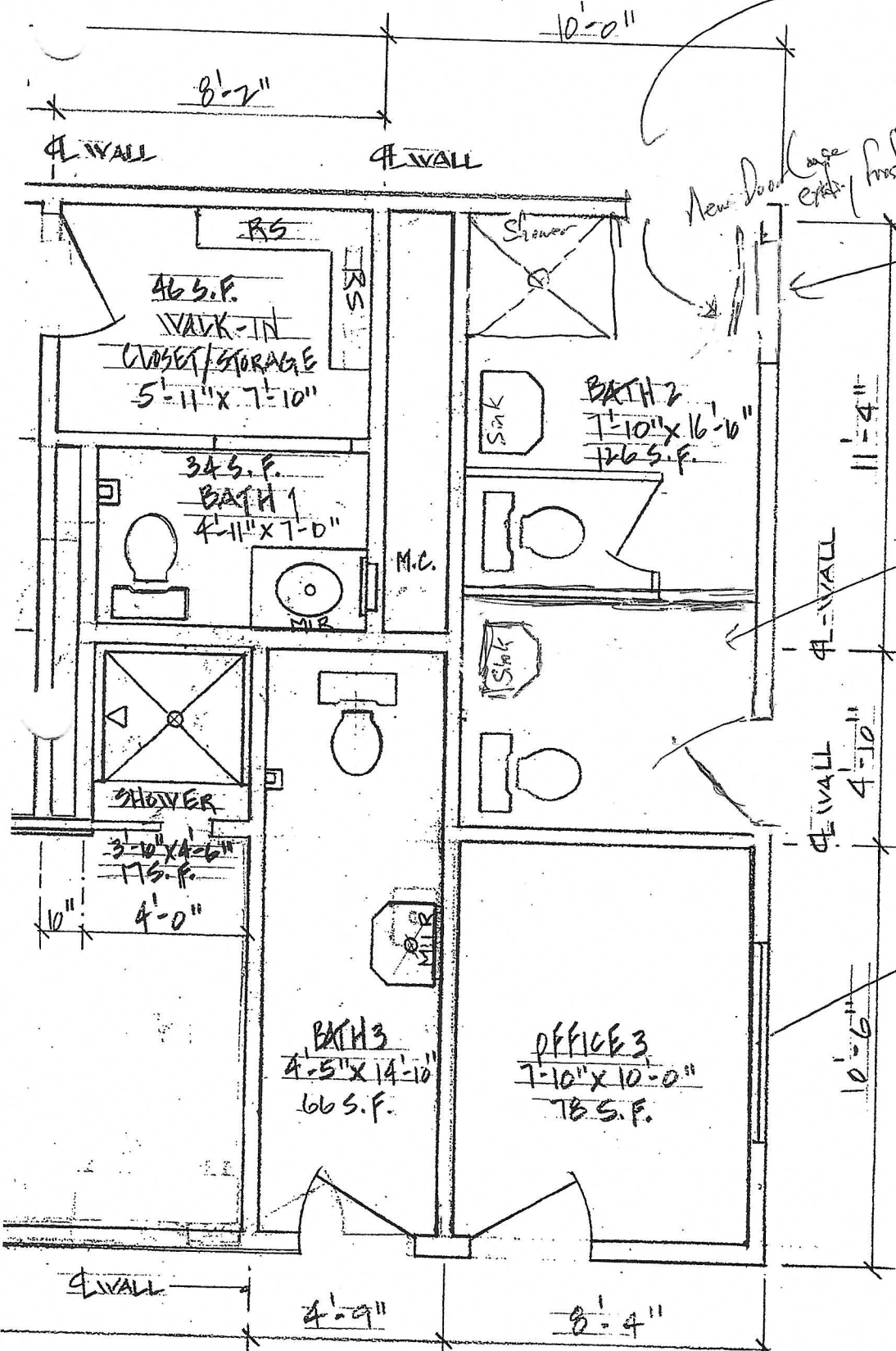
CERTIFICATION
 This is to certify that this map or plat was made under my direction.

RESULTS OF SURVEY - PHELPS DODGE CORP
THIESSEN SURVEYING SERVICES
 721 GOLF COURSE ROAD
 THATCHER, ARIZONA 85552 (602) 428-088
 WAREHOUSE AREA - HIGH CARD & NEW ERA
 CLAIMS - COCHISE COUNTY - ARIZONA

SCALE 1" = 50'
 DATE 5/7/1988
 SHEET 1 of 1 Sheets

(520) ~~388-0883~~
 803-0198

Bath for
 future Industrial
 unit



Remove door

Bath for
 "Common areas"
 Keys for Ed
 Karen & John
 only

Remove
 Window

5 BUILT FLOOR PLAN

Desert Springs Construction &
 Remodeling, L.L.C.
 P.O. Box 968
 Sierra Vista, AZ 85636

Bisbee Soil Program

Bisbee Soil Program
76 Erie St.
PO Box 1873
Bisbee, AZ 85603

Local: 520-432-5418
Toll Free: 866-930-3244

August 24, 2015

MCGLASSON JOHN B
2961 INDUSTRIAL RD STE #9
LAS VEGAS, NV 89109

Re: Completion of Soil Cleanup

NO PHYSICAL ADDRESS/ Parcel ID: 61105143C/Internal ID: 17012
Bisbee, AZ 85603

Dear Property Owner,

According to our records, you are the current owner of the above-referenced property. This letter confirms that soil sampling and cleanup activities have been completed at the property under the Bisbee Soil Program, and in accordance with work plans approved by the Arizona Department of Environmental Quality.

With the permission of the owner of the property, soil at the property was sampled and tested for the presence of metals potentially associated with past mining activities. The testing indicated that average concentrations of metals in one or more yard areas of the property were above levels requiring cleanup. A soil cleanup plan addressing the affected yard area(s) was prepared and reviewed with you or the previous owner. Consistent with the soil cleanup plan, the soils in the affected yard area(s) identified as needing removal have been removed and replaced with clean soil and the landscaping has been restored. Copies of the soil sampling results and soil cleanup plan are enclosed for your records.

If you have questions about the Bisbee Soil Program, the work performed at the property, or other related issues, please contact the Bisbee Soil Program Office by calling 520-432-5418 (toll free 866-930-3244 outside the local calling area). If you are not the current owner of the property, please notify the Bisbee Soil Program Office so that we may contact the correct owner.

Sincerely,



David P. Gosen
Manager, Remediation Projects
Freeport Minerals Corporation

Enclosures:

- 1) Soil Sampling Results
- 2) Property Cleanup Plan

Bisbee Soil Program

Bisbee Soil Program
76 Erie St.
PO Box 1873
Bisbee, AZ 85603

Local: 520-432-5418
Toll Free: 866-930-3244

Property Sampling Report							
Soil Sample Results Obtained by Freeport-McMoRan in Accordance With the 2008 Sampling and Analysis Plan							
NO PHYSICAL ADDRESS/ Parcel ID: 61105143C/Internal ID: 17012 Bisbee, AZ 85603							
Property Type based on Cochise County Records:				Commercial			
PPIN - Location	Sample ID	Sample Depth (inches)	Arsenic (ppm)	Copper (ppm)	Lead (ppm)	Manganese (ppm)	Sample Date
17012-C01	17012-C0001-REG	0 - 4"	8.75	280	96.5	813	Oct - 2012
17012-C01	17012-C0002-REG	6 - 12"	10.9	506	174	1230	Oct - 2012
17012-C01	17012-C0057-FD	6 - 12"	10.8	444	168	1370	Oct - 2012
17012-C02	17012-C0003-REG	0 - 4"	13.4	422	220	1620	Oct - 2012
17012-C02	17012-C0004-REG	6 - 12"	9.07	189	174	1780	Oct - 2012
17012-C03	17012-C0005-REG	0 - 4"	17.1	444	447	1390	Oct - 2012
17012-C03	17012-C0006-REG	6 - 12"	25.2	371	1020	4530	Oct - 2012
17012-C03	17012-C0104-REG	12 - 18"	13.6	292	481	2850	Jun - 2013
17012-C04	17012-C0007-REG	0 - 4"	21.3	1040	305	2130	Oct - 2012
17012-C04	17012-C0063-CF	0 - 4"	14.9	363	367	1300	Oct - 2012
17012-C04	17012-C0008-REG	6 - 12"	22.9	328	870	3700	Oct - 2012
17012-C04	17012-C0106-REG	12 - 18"	15.4	370	546	1600	Jun - 2013
17012-C05	17012-C0009-REG	0 - 4"	15.0	356	390	1600	Oct - 2012
17012-C05	17012-C0058-FD	0 - 4"	14.7	360	380	1440	Oct - 2012
17012-C05	17012-C0010-REG	6 - 12"	23.8	345	962	4260	Oct - 2012
17012-C05	17012-C0108-REG	12 - 18"	7.47	152	147	1220	Jun - 2013
17012-C06	17012-C0011-REG	0 - 4"	8.87	84.0	141	2300	Oct - 2012
17012-C06	17012-C0012-REG	6 - 12"	8.69	30.7	70.8	1150	Oct - 2012
17012-C06	17012-C0064-CF	6 - 12"	8.21	74.9	113	2030	Oct - 2012
17012-C07	17012-C0013-REG	0 - 4"	20.0	883	265	2230	Oct - 2012
17012-C07	17012-C0014-REG	6 - 12"	16.8	262	161	1410	Oct - 2012
17012-C08	17012-C0015-REG	0 - 4"	11.5	170	244	2680	Oct - 2012
17012-C08	17012-C0016-REG	6 - 12"	10.4	155	234	2550	Oct - 2012
17012-C09	17012-C0017-REG	0 - 4"	5.75	111	98.5	1270	Oct - 2012
17012-C09	17012-C0018-REG	6 - 12"	5.64	102	86.9	1090	Oct - 2012
17012-C10	17012-C0019-REG	0 - 4"	4.67	87.1	73.3	1030	Oct - 2012
17012-C10	17012-C0059-FD	0 - 4"	6.45	105	96.1	1220	Oct - 2012
17012-C10	17012-C0020-REG	6 - 12"	6.73	114	108	1350	Oct - 2012
17012-C11	17012-C0021-REG	0 - 4"	6.24	106	95.4	1210	Oct - 2012
17012-C11	17012-C0022-REG	6 - 12"	5.66	105	90.1	1260	Oct - 2012
17012-C12	17012-C0023-REG	0 - 4"	6.15	110	94.7	1120	Oct - 2012
17012-C12	17012-C0024-REG	6 - 12"	6.61	101	96.4	1250	Oct - 2012
17012-C13	17012-C0025-REG	0 - 4"	7.6	183	208	961	Oct - 2012
17012-C14	17012-C0027-REG	0 - 4"	7.61	161	159	571	Oct - 2012
17012-D002	17012-C0029-REG	0 - 4"	19.2	193	284	926	Oct - 2012
17012-D002	17012-C0030-REG	6 - 12"	8.62	132	124	1680	Oct - 2012
17012-D004	17012-C0100-REG	0 - 4"	11.8	142	277	1410	Nov - 2012

Bisbee Soil Program

Bisbee Soil Program
76 Erie St.
PO Box 1873
Bisbee, AZ 85603

Local: 520-432-5418
Toll Free: 866-930-3244

Property Sampling Report							
Soil Sample Results Obtained by Freeport-McMoRan in Accordance With the 2008 Sampling and Analysis Plan							
NO PHYSICAL ADDRESS/ Parcel ID: 61105143C/Internal ID: 17012 Bisbee, AZ 85603							
Property Type based on Cochise County Records:				Commercial			
PPIN - Location	Sample ID	Sample Depth (inches)	Arsenic (ppm)	Copper (ppm)	Lead (ppm)	Manganese (ppm)	Sample Date
17012-D009	17012-C0031-REG	0 - 4"	14.6	377	372	1420	Oct - 2012
17012-D009	17012-C0032-REG	6 - 12"	23.6	351	988	4570	Oct - 2012
17012-D010	17012-C0033-REG	0 - 4"	10.3	621	143	1170	Oct - 2012
17012-D010	17012-C0034-REG	6 - 12"	10.0	741	152	1100	Oct - 2012
17012-D012	17012-C0035-REG	0 - 4"	17.4	405	412	1040	Oct - 2012
17012-D012	17012-C0036-REG	6 - 12"	10.4	423	249	1200	Oct - 2012
17012-D014	17012-C0102-REG	0 - 4"	8.17	89.0	145	1080	Nov - 2012
17012-D017	17012-C0037-REG	0 - 4"	7.05	80.0	92.3	1040	Oct - 2012
17012-D017	17012-C0038-REG	6 - 12"	12.9	168	417	1220	Oct - 2012
17012-D020	17012-C0039-REG	0 - 4"	5.63	174	127	1020	Oct - 2012
17012-D020	17012-C0040-REG	6 - 12"	4.3	107	46.3	651	Oct - 2012
17012-D020	17012-C0061-FD	6 - 12"	4.2	101	51.4	682	Oct - 2012
17012-D022	17012-C0041-REG	0 - 4"	6.00	342	258	1010	Oct - 2012
17012-D022	17012-C0042-REG	6 - 12"	4.97	209	173	784	Oct - 2012
17012-D031	17012-C0043-REG	0 - 4"	8.37	48.1	84.5	1340	Oct - 2012
17012-D031	17012-C0044-REG	6 - 12"	6.99	80.2	114	2010	Oct - 2012
17012-D032	17012-C0045-REG	0 - 4"	7.66	34.1	69.2	1130	Oct - 2012
17012-D032	17012-C0046-REG	6 - 12"	7.73	40.7	77.5	1160	Oct - 2012
17012-D034	17012-C0047-REG	0 - 4"	5.42	52.7	64.4	1090	Oct - 2012
17012-D034	17012-C0048-REG	6 - 12"	5.65	48.6	61.7	1040	Oct - 2012
17012-D042	17012-C0049-REG	0 - 4"	7.46	156	214	2290	Oct - 2012
17012-D042	17012-C0062-FD	0 - 4"	8.77	165	225	2320	Oct - 2012
17012-D042	17012-C0050-REG	6 - 12"	8.50	78.2	161	2960	Oct - 2012
17012-D044	17012-C0051-REG	0 - 4"	7.78	109	201	2500	Oct - 2012
17012-D044	17012-C0052-REG	6 - 12"	7.26	105	186	2340	Oct - 2012
17012-D046	17012-C0053-REG	0 - 4"	8.03	117	158	2240	Oct - 2012
17012-D046	17012-C0054-REG	6 - 12"	9.08	119	162	2160	Oct - 2012
17012-D048	17012-C0055-REG	0 - 4"	5.64	49.0	67.4	1100	Oct - 2012
17012-D048	17012-C0056-REG	6 - 12"	5.7	53.0	71.1	1130	Oct - 2012
Cleanup Levels for Commercial Properties			30 ppm	41,000 ppm	800 ppm	32,000 ppm	

Bisbee Soil Program

Bisbee Soil Program
76 Erie St.
PO Box 1873
Bisbee, AZ 85603

Local: 520-432-5418
Toll Free: 866-930-3244

November 16, 2015

MCGLASSON JOHN B
2961 INDUSTRIAL RD STE #9
LAS VEGAS, NV 89109

Re: Completion of Soil Cleanup

NO PHYSICAL ADDRESS/ Parcel ID: 61105143B/Internal ID: 17011
Bisbee, AZ 85603

Dear Property Owner,

According to our records, you are the current owner of the above-referenced property. This letter confirms that soil sampling and cleanup activities have been completed at the property under the Bisbee Soil Program, and in accordance with work plans approved by the Arizona Department of Environmental Quality.

With the permission of the owner of the property, soil at the property was sampled and tested for the presence of metals potentially associated with past mining activities. The testing indicated that average concentrations of metals in one or more yard areas of the property were above levels requiring cleanup. A soil cleanup plan addressing the affected yard area(s) was prepared and reviewed with you or the previous owner. Consistent with the soil cleanup plan, the soils in the affected yard area(s) identified as needing removal have been removed and replaced with clean soil and the landscaping has been restored. Copies of the soil sampling results and soil cleanup plan are enclosed for your records.

If you have questions about the Bisbee Soil Program, the work performed at the property, or other related issues, please contact the Bisbee Soil Program Office by calling 520-432-5418 (toll free 866-930-3244 outside the local calling area). If you are not the current owner of the property, please notify the Bisbee Soil Program Office so that we may contact the correct owner.

Sincerely,



David P. Gosen
Manager, Remediation Projects
Freeport Minerals Corporation

Enclosures:

- 1) Soil Sampling Results
- 2) Property Cleanup Plan

Bisbee Soil Program

Bisbee Soil Program
76 Erie St.
PO Box 1873
Bisbee, AZ 85603

Local: 520-432-5418
Toll Free: 866-930-3244

Property Sampling Report							
Soil Sample Results Obtained by Freeport-McMoRan in Accordance With the 2008 Sampling and Analysis Plan							
NO PHYSICAL ADDRESS/ Parcel ID: 61105143B/Internal ID: 17011 Bisbee, AZ 85603							
Property Type based on Cochise County Records:				Commercial			
PPIN - Location	Sample ID	Sample Depth (inches)	Arsenic (ppm)	Copper (ppm)	Lead (ppm)	Manganese (ppm)	Sample Date
17011-C004	17011-C0001-REG	0 - 4"	9.33	302	128	1660	Oct - 2012
17011-C004	17011-C0025-FD	0 - 4"	10.2	322	151	1830	Oct - 2012
17011-C004	17011-C0002-REG	6 - 12"	7.9	172	98.0	1360	Oct - 2012
17011-C005	17011-C0003-REG	0 - 4"	11.4	217	120	339	Oct - 2012
17011-C005	17011-C0027-CF	0 - 4"	9.82	177	82.6	377	Oct - 2012
17011-C005	17011-C0004-REG	6 - 12"	8.31	95.8	121	144	Oct - 2012
17011-C007	17011-C0005-REG	0 - 4"	8.74	319	302	1060	Oct - 2012
17011-C007	17011-C0006-REG	6 - 12"	9.33	300	290	1230	Oct - 2012
17011-C009	17011-C0007-REG	0 - 4"	8.74	314	294	1170	Oct - 2012
17011-C009	17011-C0008-REG	6 - 12"	9.69	317	307	1180	Oct - 2012
17011-C018	17011-C0009-REG	0 - 4"	4.79	140	87.0	701	Oct - 2012
17011-C018	17011-C0010-REG	6 - 12"	3.64	70.5	56.2	986	Oct - 2012
17011-C020	17011-C0011-REG	0 - 4"	6.68	158	103	1660	Oct - 2012
17011-C020	17011-C0026-FD	0 - 4"	5.68	146	87.9	1790	Oct - 2012
17011-C020	17011-C0012-REG	6 - 12"	6.41	101	107	1930	Oct - 2012
17011-C022	17011-C022-SSC-C0245-REG	0 - 4"	5.83	156	100	685	Apr - 2014
17011-C023	17011-C023-SSC-C0249-REG	0 - 4"	8.14	175	191	1770	Apr - 2014
17011-C024	17011-C024-SSC-C0253-REG	0 - 4"	9.45	348	693	1890	Apr - 2014
17011-C025	17011-C025-SSC-C0258-REG	0 - 4"	11.1	236	187	1970	Apr - 2014
17011-C025	17011-C025-NSC-C0259-REG	6 - 12"	8.99	234	129	2380	Apr - 2014
17011-C026	17011-C026-SSC-C0262-REG	0 - 4"	11.6	387	166	1800	Apr - 2014
17011-C026	17011-C026-NSC-C0263-REG	6 - 12"	10.8	303	192	1650	Apr - 2014
17011-C027	17011-C0013-REG	0 - 4"	12.8	329	195	1680	Oct - 2012
17011-C027	17011-C0014-REG	6 - 12"	15.1	384	234	2010	Oct - 2012
17011-C028	17011-C0230-REG	0 - 4"	14.9	82.8	251	2740	May - 2013
17011-C028	17011-C0231-REG	6 - 12"	7.02	28.5	112	1540	May - 2013
17011-C029	17011-C0015-REG	0 - 4"	13.4	376	217	1930	Oct - 2012
17011-C029	17011-C0016-REG	6 - 12"	14.0	385	227	1920	Oct - 2012
17011-C030	17011-C0232-REG	0 - 4"	14.3	173	275	2240	May - 2013
17011-C030	17011-C0233-REG	6 - 12"	16.1	179	300	3250	May - 2013

Bisbee Soil Program

Bisbee Soil Program
76 Erie St.
PO Box 1873
Bisbee, AZ 85603

Local: 520-432-5418
Toll Free: 866-930-3244

Property Sampling Report

Soil Sample Results Obtained by Freeport-McMoRan in Accordance With the 2008 Sampling and Analysis Plan

NO PHYSICAL ADDRESS/ Parcel ID: 61105143B/Internal ID: 17011
Bisbee, AZ 85603

Property Type based on Cochise County Records:

Commercial

PPIN - Location	Sample ID	Sample Depth (inches)	Arsenic (ppm)	Copper (ppm)	Lead (ppm)	Manganese (ppm)	Sample Date
17011-C031	17011-C0017-REG	0 - 4"	12.0	289	224	1860	Oct - 2012
17011-C031	17011-C0018-REG	6 - 12"	11.4	276	204	1740	Oct - 2012
17011-C032	17011-C0019-REG	0 - 4"	16.2	152	303	2930	Oct - 2012
17011-C032	17011-C0020-REG	6 - 12"	15.3	55.6	293	3280	Oct - 2012
17011-C033	17011-C0100-REG	0 - 4"	19.5	397	328	1400	Dec - 2012
17011-C033	17011-C0108-FD	0 - 4"	18.4	386	327	1430	Dec - 2012
17011-C033	17011-C0101-REG	6 - 12"	14.9	251	258	907	Dec - 2012
17011-C034	17011-C0111-REG	0 - 4"	29.1	355	358	2310	Jan - 2013
17011-C034	17011-C0112-REG	6 - 12"	26.2	111	226	1510	Jan - 2013
17011-C035	17011-C0234-REG	0 - 4"	33.8	525	208	2050	May - 2013
17011-C035	17011-C0244-FD	0 - 4"	32.5	498	208	1940	May - 2013
17011-C035	17011-C0235-REG	6 - 12"	31.7	348	180	1870	May - 2013
17011-C036	17011-C0236-REG	0 - 4"	27.3	1680	184	1520	May - 2013
17011-C037	17011-C0102-REG	0 - 4"	13.4	281	233	878	Dec - 2012
17011-C037	17011-C0103-REG	6 - 12"	8.44	102	150	490	Dec - 2012
17011-C038	17011-C0021-REG	0 - 4"	24.2	379	479	1060	Oct - 2012
17011-C038	17011-C0022-REG	6 - 12"	25.9	269	506	1230	Oct - 2012
17011-C039	17011-C0104-REG	0 - 4"	23.3	654	301	2060	Dec - 2012
17011-C039	17011-C0105-REG	6 - 12"	37.8	394	257	1680	Dec - 2012
17011-C040	17011-C0023-REG	0 - 4"	27.4	1320	213	1260	Oct - 2012
17011-C040	17011-C0024-REG	6 - 12"	23.0	361	103	2460	Oct - 2012
17011-C041	17011-C0238-REG	0 - 4"	24.5	1410	162	1800	May - 2013
17011-C041	17011-C0239-REG	6 - 12"	21.5	1080	127	2280	May - 2013
17011-C042	17011-C0113-REG	0 - 4"	16.1	256	292	1340	Jan - 2013
17011-C042	17011-C0114-REG	6 - 12"	26.9	107	357	1060	Jan - 2013
17011-C043	17011-C0106-REG	0 - 4"	32.9	404	217	1320	Dec - 2012
17011-C043	17011-C0107-REG	6 - 12"	55.3	168	297	1240	Dec - 2012
17011-C044	17011-C0109-REG	0 - 4"	29.5	684	288	1790	Jan - 2013
17011-C044	17011-C0110-REG	6 - 12"	29.3	232	150	1230	Jan - 2013
17011-C045	17011-C0240-REG	0 - 4"	20.2	479	186	1100	May - 2013
17011-C046	17011-C0242-REG	0 - 4"	30.5	2010	248	2250	May - 2013
17011-C046	17011-C0243-REG	6 - 12"	22.7	752	160	1900	May - 2013
17011-D01	17011-C0028-REG	0 - 4"	16.3	152	43.7	200	Oct - 2012
17011-D01	17011-C0029-REG	6 - 12"	7.08	86.1	70.0	79.0	Oct - 2012
17011-D02	17011-C0030-REG	0 - 4"	11.5	182	326	1410	Oct - 2012
17011-D02	17011-C0031-REG	6 - 12"	8.61	153	199	2000	Oct - 2012
17011-D03	17011-C0032-REG	0 - 4"	17.2	237	140	876	Oct - 2012

Bisbee Soil Program

Bisbee Soil Program
 76 Erie St.
 PO Box 1873
 Bisbee, AZ 85603

Local: 520-432-5418
 Toll Free: 866-930-3244

Property Sampling Report							
Soil Sample Results Obtained by Freeport-McMoRan in Accordance With the 2008 Sampling and Analysis Plan							
NO PHYSICAL ADDRESS/ Parcel ID: 61105143B/Internal ID: 17011 Bisbee, AZ 85603							
Property Type based on Cochise County Records:				Commercial			
PPIN - Location	Sample ID	Sample Depth (inches)	Arsenic (ppm)	Copper (ppm)	Lead (ppm)	Manganese (ppm)	Sample Date
17011-D03	17011-C0033-REG	6 - 12"	36.5	219	219	1230	Oct - 2012
17011-D04	17011-C0034-REG	0 - 4"	36.6	218	331	1050	Oct - 2012
17011-D04	17011-C0035-REG	6 - 12"	30.7	241	664	1290	Oct - 2012
17011-D05	17011-C0036-REG	0 - 4"	11.0	158	355	1720	Oct - 2012
17011-D05	17011-C0037-REG	6 - 12"	11.3	172	312	1590	Oct - 2012
17011-D06	17011-C0038-REG	0 - 4"	10.8	167	276	1430	Oct - 2012
17011-D06	17011-C0039-REG	6 - 12"	8.07	140	180	1930	Oct - 2012
Cleanup Levels for Commercial Properties			30 ppm	41,000 ppm	800 ppm	32,000 ppm	

Handwritten notes:

- Industrial units fully insulated
- Industrial units fully insulated
- Old building is the protected
- New storage units not the protected
- Tank as book.
- April HVAC
- Industrial units all have HVAC
- Tank level + \$200 for insurance annually
- A family left storage.
- no error between town and their