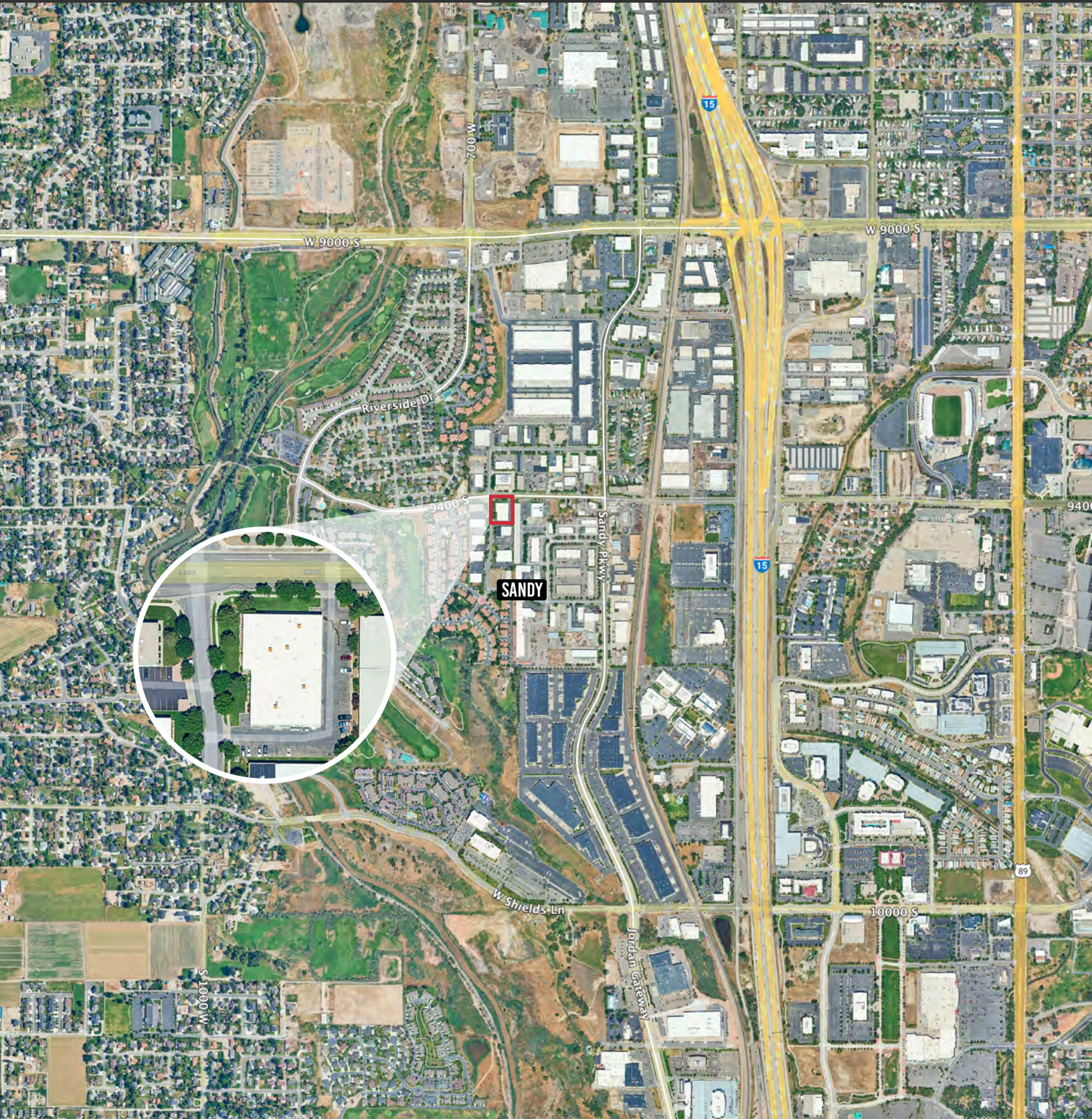


Sandy Industrial

649 West 9400 South
Sandy, UT 84070

\$1.35 PSF/month NNN



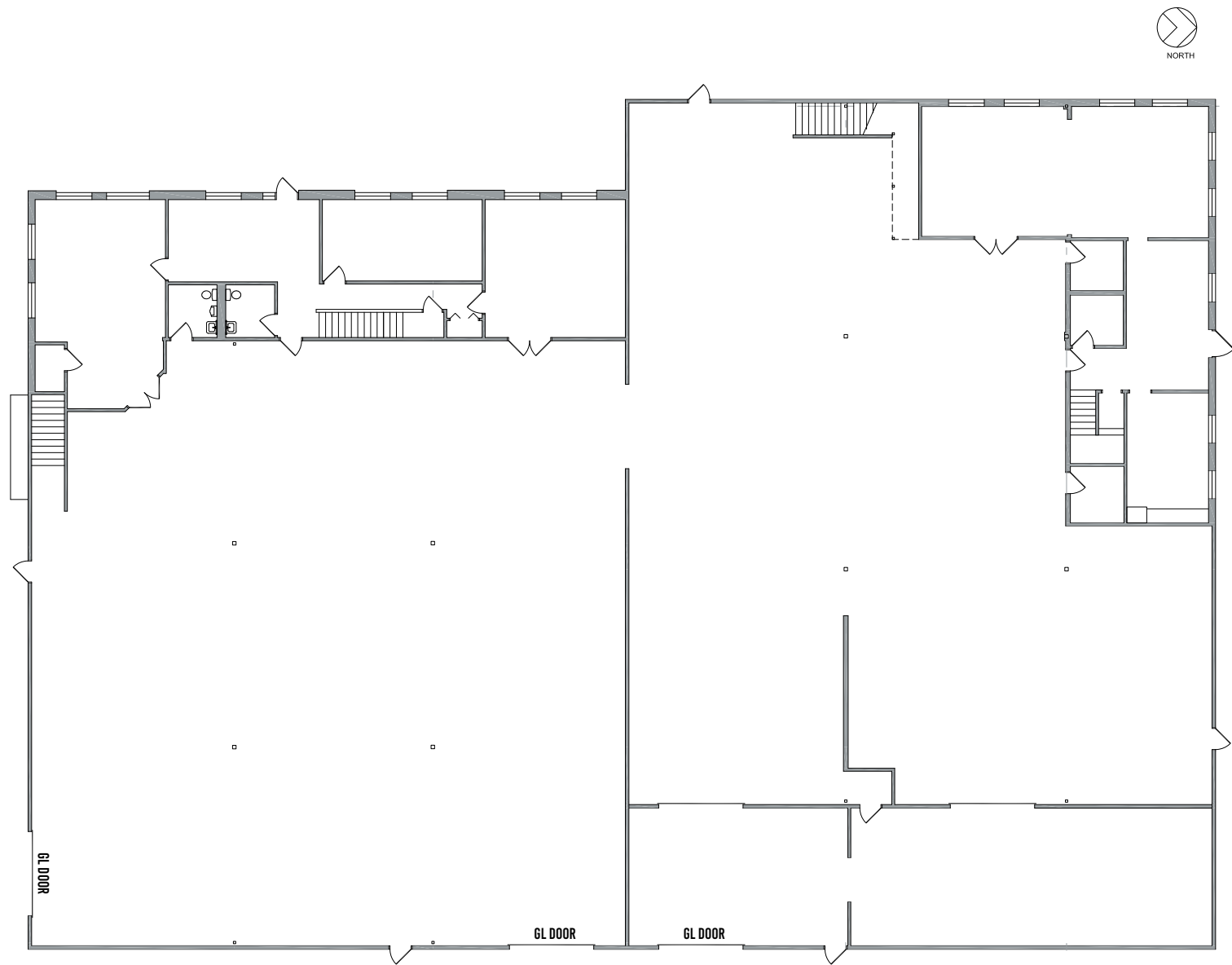
INDUSTRIAL | FOR LEASE

PROPERTY INFORMATION

- > 23,255 Total SF
 - Main Floor Offices - 3,027 SF
 - Second Floor Offices - 3,517 SF
- > \$1.35 PSF /month NNN
- > 3 Grade Level Doors
- > 208/120V 800 Amp 3 Phase
- > 37 Parking Stalls + 2 Handicap Stalls
- > Easy Access to I-15
- > Fire Sprinklers



Main Floor



Second Floor

