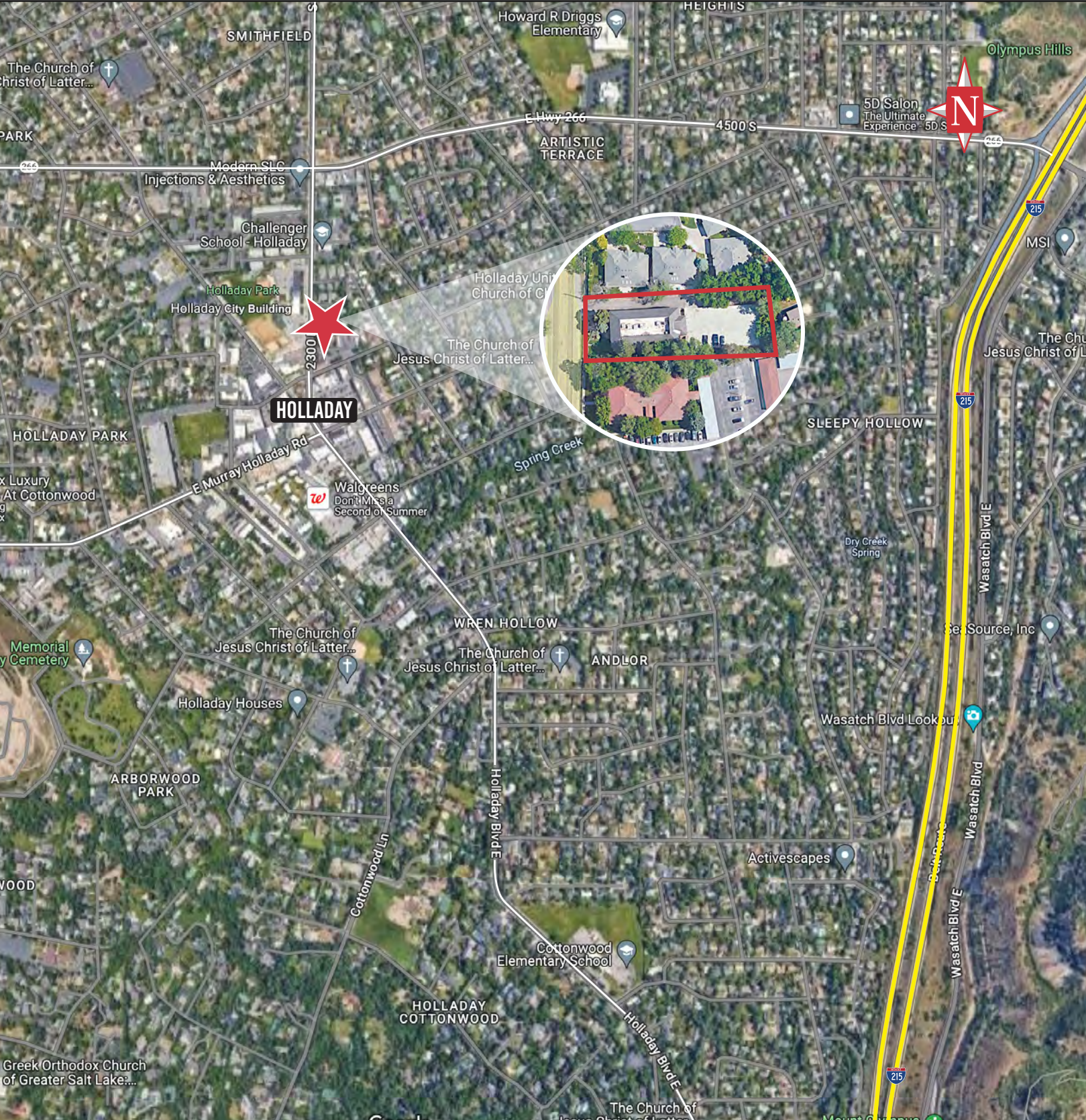


Holladay Park Plaza

4609 S. 2300 E.
Holladay, UT 84117



OFFICE | FOR LEASE

Prime office location that is within walking distance from downtown Holladay. Directly across the street from the Holladay city building and park, which hosts live music and events. Second-floor available office features a conference room, private offices, and private restrooms, along with both covered and surface parking and a common area patio.

PROPERTY INFORMATION

- > Suite 202 & 204: \$35 PSF gross
- > Approx. 2,900 RSF available (divisible)
- > 10 Private offices
- > Conference room
- > (2) Reception / waiting area / open office
- > Private sauna and 2 private restrooms (shower)
- > Large windows with natural light
- > 25 covered parking / 25 surface parking
- > Signage available
- > Across the street from Holladay City buildings
- > Signage available
- > ALL UTILITIES INCLUDED, NO CAM CHARGES, AND FREE WIFI IS INCLUDED.

FLOOR PLAN

