

# Grocery-Anchored Starbucks Offering Brand New Construction | Double Drive-Thru



Single-Tenant Net Lease Investment  
SWC 16<sup>th</sup> Street & Southern Ave | Phoenix, AZ

**\$3,853,316**



**ECHO WEST**

CAPITAL ADVISORS

**TIM WESTFALL**

Partner

**Echo West Capital Advisors**

(602) 628 - 6298

[TWestfall@EchoWest.com](mailto:TWestfall@EchoWest.com)

**RYAN MORONEY**

Partner

**Echo West Capital Advisors**

(602) 421 - 9100

[RMoroney@EchoWest.com](mailto:RMoroney@EchoWest.com)

**JACK MCANDREW**

Vice President

**Echo West Capital Advisors**

(602) 509 - 5800

[JMcAndrew@EchoWest.com](mailto:JMcAndrew@EchoWest.com)

# DEAL SUMMARY



# STARBUCKS™

## Address

SWC 16th Street & Southern Ave  
Phoenix, AZ 85042

## Asking Price

\$3,853,316

## Cap Rate

5.00%

## Annual Rent

\$192,716

## Lease Term

10 Years

## Rent Increases

10% Every 5 Years

## Year Built

2024

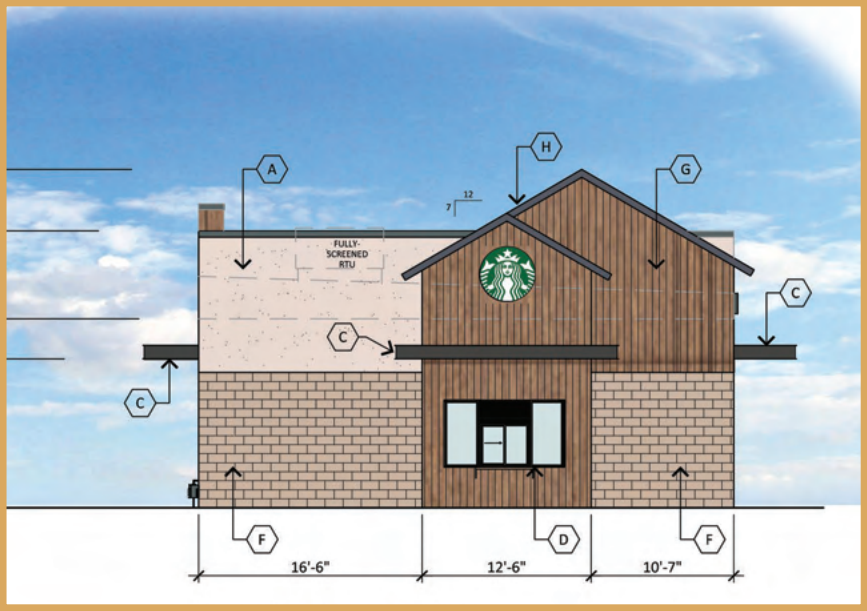


# LEASE SUMMARY

Tenant Name	Starbucks Corporation
Lease Guarantor	Corporate (NASDAQ: SBUX)
Address	SWC 16th St. & Southern Avenue Phoenix, AZ 85042
Rent Commencement	September 2024
Lease Term	10 Years
Building Size	2,400 SF
Lot Size	0.60 AC
Landlord Responsibilities	Roof & Structure
Year Built	2024
Renewal Options	4, 5-Year Options
Rent Increases	10% Every 5 Years
Parcel Number	114-29-100

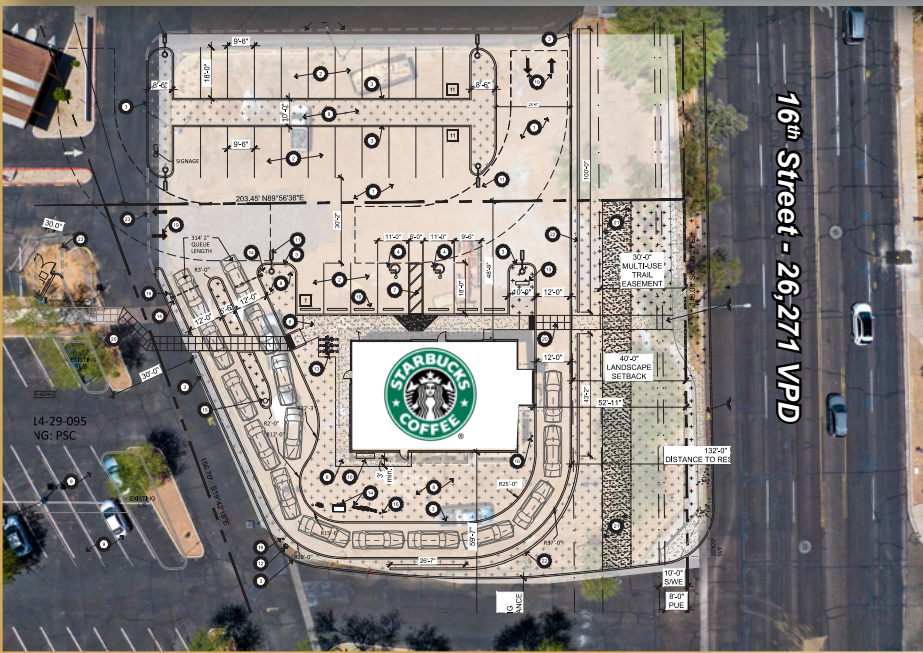


Construction As of May 2024



Unique "Farmhouse" Construction

# INVESTMENT HIGHLIGHTS



## Long-Term Lease | Contractual Rental Increases

Offering features a brand new 10-year initial lease term with attractive 10% increases every 5 years.

## Ideal, Low-Management Investment

Offering comes with fee simple ownership and limited landlord responsibilities.

## Corporately Backed Lease | Market Leader in the Category

Lease is corporately guaranteed by the largest coffee company in the world (NASDAQ: SBUX) with over 38,000 stores in 87 countries making this a truly safe investment for any prospective investor. Starbucks has an S&P Investment Grade Credit Rating of "BBB+" with annual revenue in excess of \$32B and is consistently ranked as a top 200 company on the Fortune 500 list.

## Brand New Construction | Grand Opening in September!

Offering features brand new 10-year lease with Starbucks in a new freestanding, double drive-thru with patio prototype which includes unique "farmhouse" construction to meet municipality standards. This is one of Starbucks' first double drive-thru locations in the State of Arizona.

## Grocery-Anchored Outparcel | Recent Safeway Remodel

The subject property sits conveniently as a retail outparcel to a 58,000 SF Safeway right on 16<sup>th</sup> Street. Safeway recently remodeled the store showing long-term commitment to the shopping center and surrounding trade area.

## Heavily Trafficked Intersection | Prime Street-Front Visibility

Starbucks is positioned one building off the hard corner at an intersection that sees over 60,000 vehicles per day with prominent visibility on 16<sup>th</sup> Street, a primary thoroughfare in South Phoenix.

## Proximity to South Mountain Community College & South Mountain High School | Minutes from DT Phoenix

South Mountain Community College is South Phoenix's only community college option with nearly 4,000 students present on campus on a daily basis. South Mountain High School is situated approximately 0.5 miles away with over 2,000 on-campus students. The building will also benefit from being a short 10-minute drive to Downtown Phoenix and a few miles South of the I-17 Freeway.

## Dense Submarket | Thriving Metropolis

The property is located in a densely populated submarket of Phoenix consisting of nearly 225,000 people residing within a 5-mile radius of the site. Maricopa County has year-over-year been ranked as one of the fastest growing counties in the United States and has created one of the most dynamic economies in the nation.

# TENANT PROFILE



Starbucks Corporation is an American multinational chain of coffeehouses and roastery reserves headquartered in Seattle, Washington. It is the world's largest coffeehouse chain and was founded in 1971 by Jerry Baldwin, Zev Siegl, and Gordon Bowker at Seattle's Pike Place Market. The rise of the second wave of coffee culture is generally attributed to Starbucks, which introduced a wider variety of coffee experiences. Starbucks serves hot and cold drinks, whole-bean coffee, micro-ground instant coffee, espresso, caffe latte, full and loose-leaf teas, juices, frappuccino beverages, pastries, and snacks. In addition to drinks and food, many stores carry Starbucks' official merchandise, such as mugs, tumblers, scoops, and coffee presses. There are also several select "Starbucks Evenings" locations that offer beer, wine, and appetizers. Starbucks was recognized by Fortune 500 on their 2023 World's Most Admired Companies list, keeping the

#1 spot in the Food Services industry, and ranking 14<sup>th</sup> overall - out of 645 companies. With the U.S. store count slated to reach more than **16,300** - **with a 4% net new store growth** planned in FY24 and an aspiration to reach **20,000** over the long term - the company has plans to leverage the vast channels available to meet the evolving needs of customers and further elevate the brand. Starbucks will focus on **running better stores through a strong operating foundation**.



WEBSITE	www.starbucks.com
HEADQUARTERS	Seattle, WA
FOUNDED IN	1971



LOCATED IN  
**87 Countries**



NO. OF STORES  
**38,000+ Worldwide**



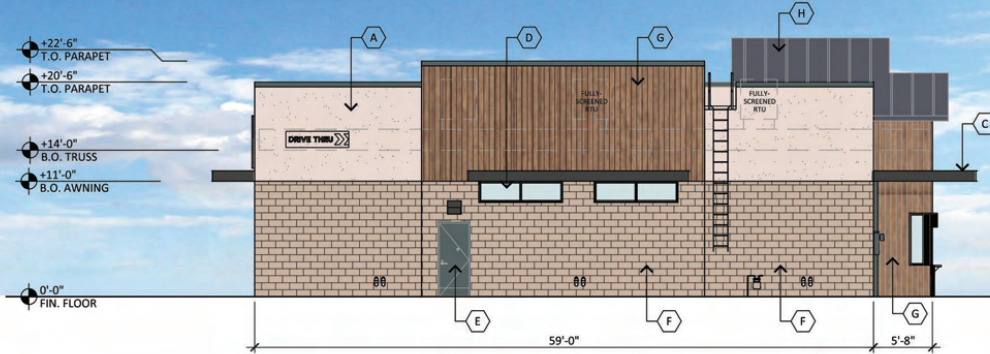
STOCK TICKER  
**NASDAQ: SBUX**



TOTAL REVENUE  
**\$35.98 Billion (2023)**

**NASDAQ: SBUX stock bolted 24.5% in August 2024, the largest percent increase on record after naming Brian Niccol, current head of Chipotle, as the next Starbucks CEO. Read more [here](#).**

# SITE ELEVATIONS - Unique "Farmhouse" Construction



**SOUTH ELEVATION**

SCALE: 1/8"=1'-0"



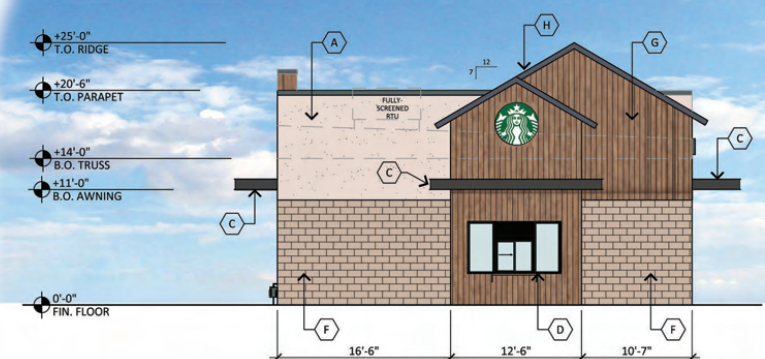
**WEST ELEVATION**

SCALE: 1/8"=1'-0"



**NORTH ELEVATION**

SCALE: 1/8"=1'-0"



**EAST ELEVATION**

SCALE: 1/8"=1'-0"



# PROPERTY AERIAL

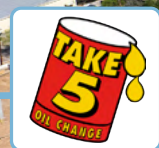


**SOUTH MOUNTAIN  
COMMUNITY COLLEGE**  
3,597+ Students



CURVE AT ALTA VISTA  
72 SINGLE-FAMILY UNITS

**Filiberto's**  
MEXICAN FOOD  
(Coming Soon)



16th Street - 26,271 VPD



Southern Avenue - 34,577 VPD

# PROPERTY AERIAL



# PROPERTY AERIAL



**fray's** **FOOD CITY** **planet fitness** **Walgreens**  
**DOLLAR TREE** **DISCOUNT TIRE** **SUBWAY**  
**SONIC** **TACO BELL** **BURGER KING** **Arbys** **KFC**

**HARBOR FREIGHT**  
QUALITY TOOLS LOWEST PRICES  
**Jack in the box** **McDonald's** **Popeye's** **LOS ALTOS RANCH MARKET** **T Mobile**

**SOUTH MOUNTAIN HIGH SCHOOL**  
2,175+ Students

**STARBUCKS™**

**SAFEWAY**

**R&C**  
APPLIANCES • ELECTRONICS • COMPUTER SERVICES

**Arizona Financial CREDIT UNION**

**SONORAN Express CAR WASH**

**Filiberto's MEXICAN FOOD**  
(Coming Soon)

**risas**  
dental • braces

**SAFEWAY GASOLINE**

Southern Avenue - 34,577 VPD

16<sup>th</sup> Street - 26,271 VPD

# AREA RETAIL PHOTOGRAPHS



# AREA RETAIL PHOTOGRAPHS



# LOCATION OVERVIEW - Phoenix, AZ

Phoenix, the seat of Maricopa County, is the largest and most populous city in the state of Arizona and the only state capital with a population of more than a million people. Phoenix is the second largest city in the Western United States after Los Angeles, California. It is the region's primary cultural, economic, and financial center and a major transportation hub. Businesses thrive in Phoenix. Combining a well-trained and educated workforce with Arizona's stable business environment and the Phoenix signature quality of life, all the ingredients are in place for business success. A new business is not on its own arriving in Phoenix. A burgeoning ecosystem of businesses and continuing services from the City make Phoenix a dynamic place for planting a company's flag. Phoenix is a flourishing community with a young, skilled workforce ready to take on innovative jobs. Over the last decade, Phoenix has exploded to take the spot as the 5th largest city and fastest-growing city of the last decade according to the U.S. Census Bureau.

- *Phoenix boasts a modern infrastructure with access to major markets across the U.S. and globe with **7 major freeways**, **22 miles of resident rail**, and **3 airports** strategically located throughout the valley. Read how Phoenix was built for the future [here](#).*
- *The Phoenix Metro is home to over **3,700 internationally-owned businesses** and continues to grow. Companies take advantage of a domestic location and the low-cost of operating in Phoenix. Read more about how Phoenix can help your business thrive [here](#).*
- *A diversity of industries and talents has attracted companies from all over the world. **Banner Health, American Express, TSMC, Sumco, Charles Schwab, Mayo Clinic, and Blue Optima** are a few of the numerous growing companies in Phoenix. See why Phoenix continues attracting global business [here](#).*
- *Phoenix has grown over **30% since 2010** and is home to **500+ employers**, including big names like **Quicken Loans** and **Uber**. **ASU's Downtown Campus attracts over 10,000 students yearly**. Discover why Downtown Phoenix is a top spot for business and innovation [here](#).*

**5<sup>th</sup> LARGEST**  
City in the U.S.

**21% INCREASE**  
2010-2023 Phoenix MSA  
Population Growth

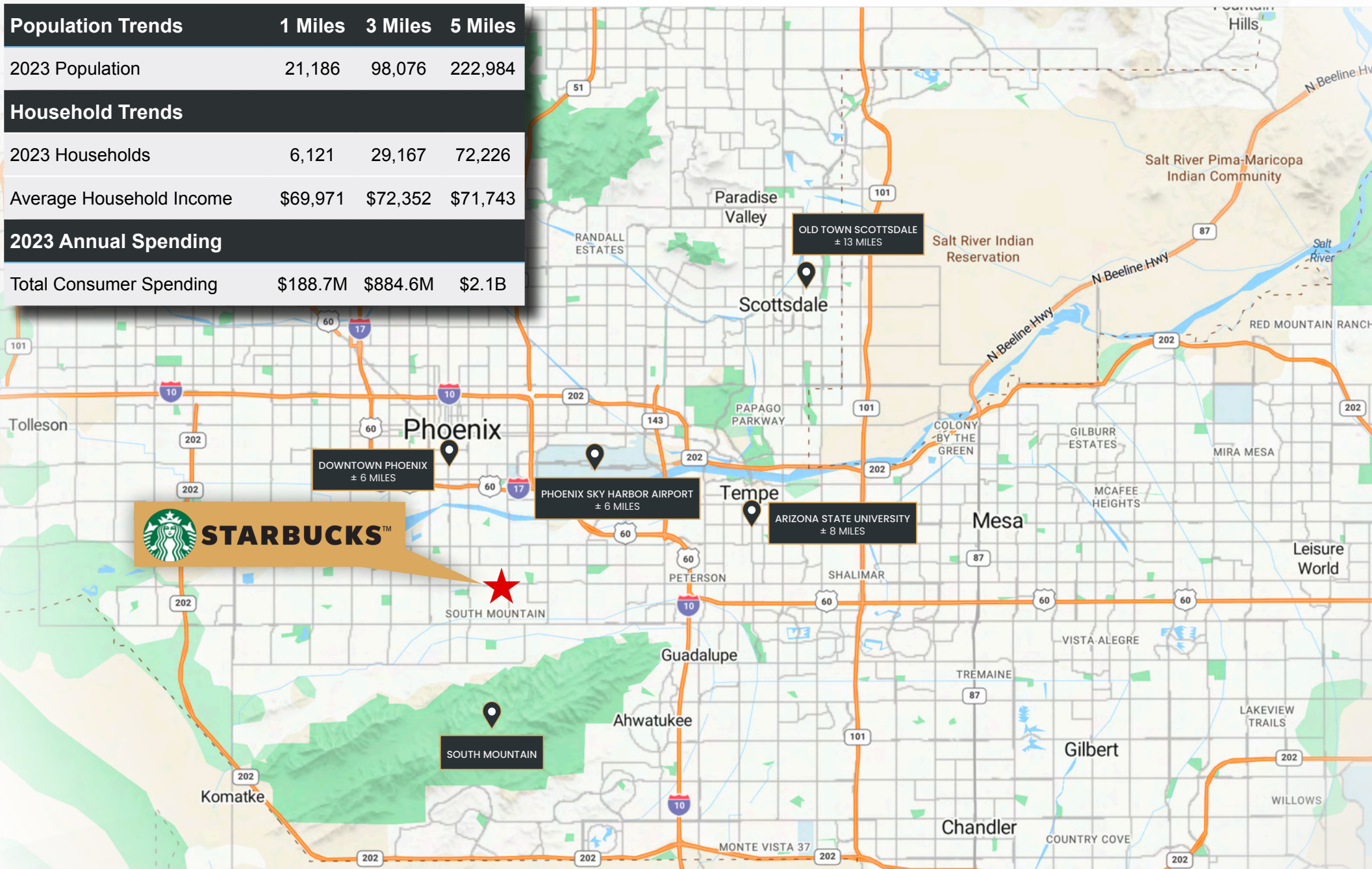
**FASTEST**  
Growing City in the U.S.  
over the past decade



# DEMOGRAPHICS - Phoenix, AZ



Population Trends	1 Miles	3 Miles	5 Miles
2023 Population	21,186	98,076	222,984
Household Trends			
2023 Households	6,121	29,167	72,226
Average Household Income	\$69,971	\$72,352	\$71,743
2023 Annual Spending			
Total Consumer Spending	\$188.7M	\$884.6M	\$2.1B





# ECHOWEST

CAPITAL ADVISORS

EXCLUSIVELY PRESENTED BY:

## TIM WESTFALL

Partner

**Echo West Capital Advisors**

(602) 628 - 6298

TWestfall@EchoWest.com



## RYAN MORONEY

Partner

**Echo West Capital Advisors**

(602) 421 - 9100

RMoroney@EchoWest.com



## JACK MCANDREW

Vice President

**Echo West Capital Advisors**

(602) 509 - 5800

JMcAndrew@EchoWest.com



EchoWest.com



---

This Offering Memorandum may not be all-inclusive or contain all the information a prospective purchaser may desire. The information contained in this Offering Memorandum is confidential and furnished solely for the purpose of a review by a prospective purchaser of the Property. It is not to be used for any other purpose or made available to any other person without the written consent of the listing brokerage company. The material is based in part upon information supplied by the Owner and in part upon financial information obtained by Echo West Capital Advisors from sources it deems reliable. Neither Owner, nor their officers, employees, or agents make any representation or warranty, express or implied, as to the accuracy or completeness of this Offering Memorandum or any of its contents and no legal liability is assumed or shall be implied with respect thereto. Prospective purchasers should make their own projections, form their own conclusions without reliance upon the material contained herein, and conduct their own due diligence. All photographs and graphic elements are property of Echo West Capital Advisors and use without expressed written permission is prohibited.

---



# ECHOWEST

CAPITAL ADVISORS