

1200 MAPLE ST STE 102

MADERA, CA 93637



PROPERTY DESCRIPTION

This exceptional property spans 1,513 square feet. Boasting numerous attractive features, the layout of the office building provides extensive possibilities for multiple office areas within the suite. With shared parking and a positive flow of traffic, this location is poised to enhance the visibility and convenience for your business. Feel free to contact me for further details or to schedule a viewing.

OFFERING SUMMARY

Lease Rate:	\$1.25 SF Plus (NNN)
Available SF:	1,513 SF

DEMOGRAPHICS	1 MILE	5 MILES	10 MILES
Total Households	2,840	23,041	27,411
Total Population	9,236	81,399	97,908
Average HH Income	\$56,421	\$64,109	\$66,878



RE/MAX GOLD

Each office independently owned and operated

KIRK ATAMIAN

Commercial Specialist

559.246.0000

kirkatamian@gmail.com

CalDRE #02127378

501 North E St, Suite H
Madera, CA 93638

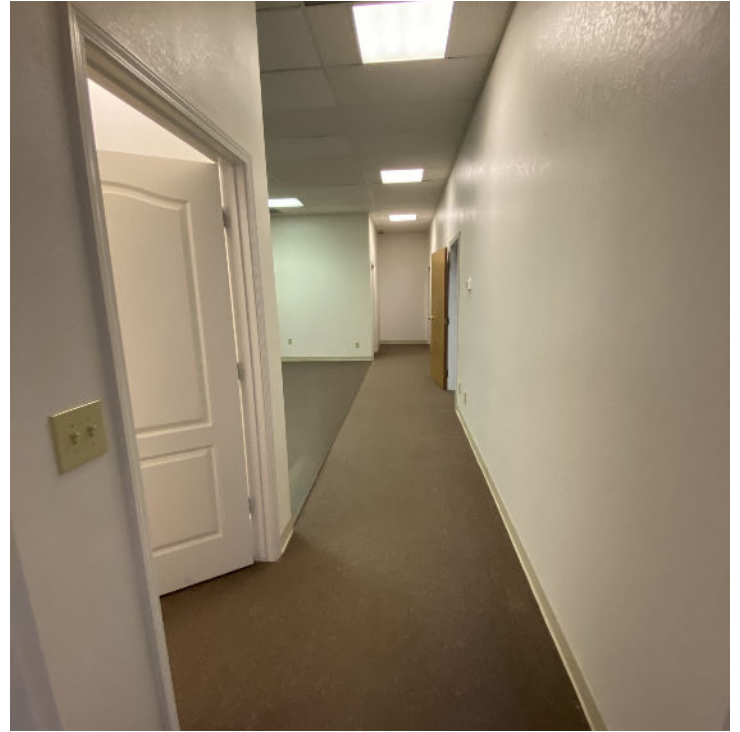
FOR LEASE

OFFICE BUILDING

ADDITIONAL PHOTOS

1200 MAPLE ST STE 102

MADERA, CA 93637



RE/MAX
COMMERCIAL®

RE/MAX GOLD

Each office independently owned and operated

KIRK ATAMIAN

Commercial Specialist

559.246.0000

kirkatamian@gmail.com

CalDRE #02127378

501 North E St, Suite H
Madera, CA 93638

All information contained herein is deemed reliable but not guaranteed. Each office independently owned and operated

1200 MAPLE ST STE 102

MADERA, CA 93637



HIGHLIGHTS

- Next door to the Madera DMV offices
- Versatile office layout within the suite provides endless possibilities for customization.
- Shared parking and a positive traffic flow enhance accessibility and convenience.
- Strategically located with numerous attractive features, making it an ideal business hub.
- Easy to access location,



RE/MAX GOLD

Each office independently owned and operated

KIRK ATAMIAN

Commercial Specialist

559.246.0000

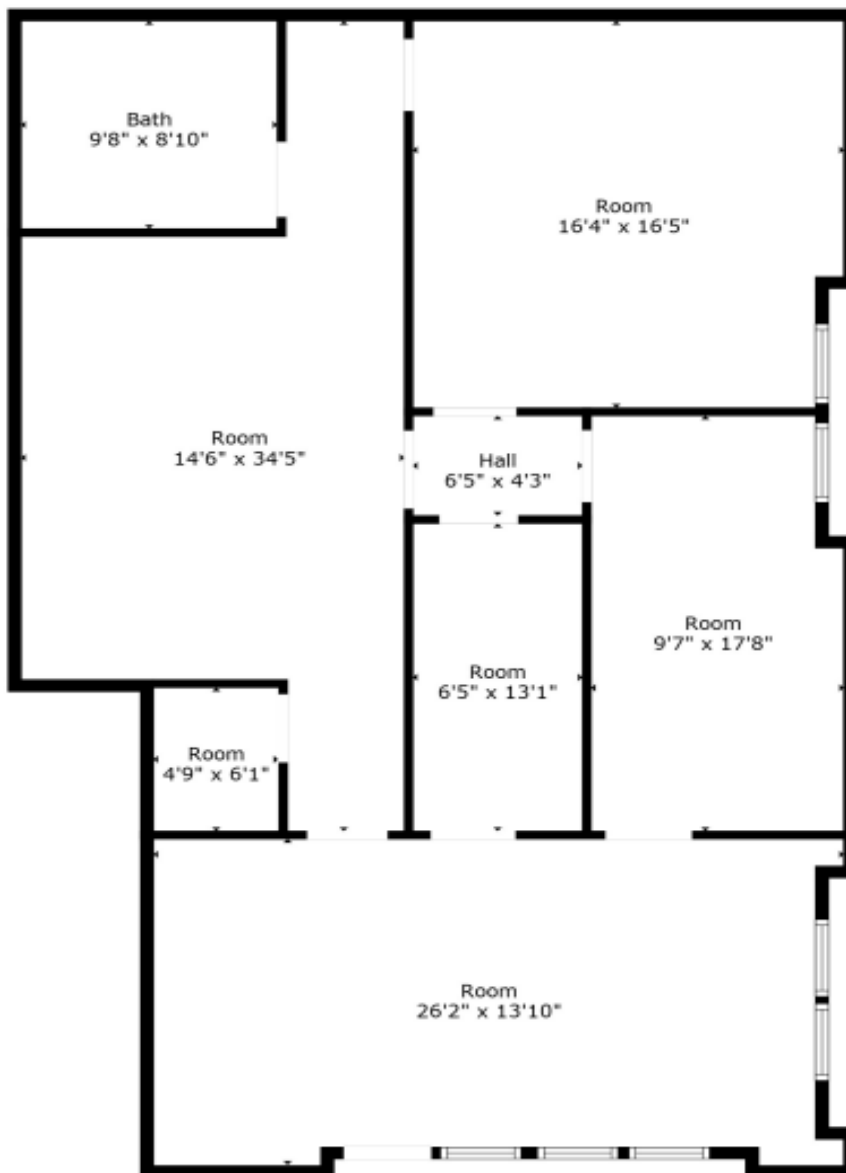
kirkatamian@gmail.com

CalDRE #02127378

501 North E St, Suite H
Madera, CA 93638

1200 MAPLE ST STE 102

MADERA, CA 93637



TOTAL: 1374 sq. ft
FLOOR 1: 1374 sq. ft

Measurements Are Calculated By Cubicasa Technology. Deemed Highly Reliable But Not Guaranteed.



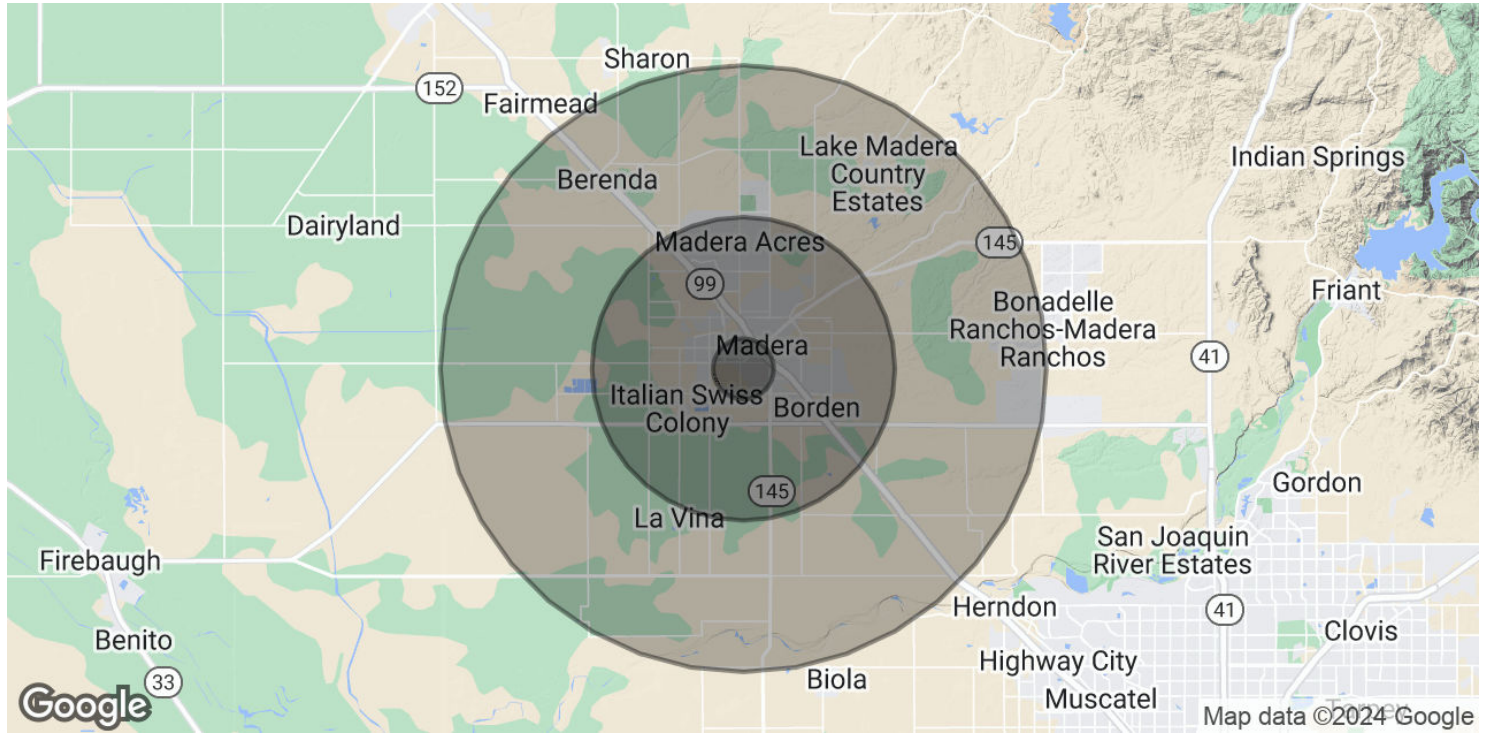
RE/MAX GOLD
Each office independently owned and operated

KIRK ATAMIAN
Commercial Specialist
559.246.0000
kirkatamian@gmail.com
CalDRE #02127378

501 North E St, Suite H
Madera, CA 93638

1200 MAPLE ST STE 102

MADERA, CA 93637



POPULATION

	1 MILE	5 MILES	10 MILES
Total Population	9,236	81,399	97,908
Average Age	30.3	30.5	31.6
Average Age (Male)	29.8	29.8	31.2
Average Age (Female)	31.1	31.4	32.3

HOUSEHOLDS & INCOME

	1 MILE	5 MILES	10 MILES
Total Households	2,840	23,041	27,411
# of Persons per HH	3.3	3.5	3.6
Average HH Income	\$56,421	\$64,109	\$66,878
Average House Value	\$228,551	\$219,915	\$247,384

* Demographic data derived from 2020 ACS - US Census



RE/MAX GOLD
Each office independently owned and operated

KIRK ATAMIAN
Commercial Specialist
559.246.0000
kirkatamian@gmail.com
CalDRE #02127378

501 North E St, Suite H
Madera, CA 93638