



BUSINESS ADVISORS

WWW.LBAWEB.COM

Palmdale Speed Wash Business & Property

<https://www.palmdalespeedwash.com/>

29K sqft property, 5400 sqft Building

144 E Palmdale Blvd, Palmdale Ca 93550

Asking Price: \$2,399,000 Business & Property

Please do not speak to anyone at this location!!

Investment Opportunity: Prime Express Car Wash & Property

Key Highlights:

Newly remodeled in 2022 with state-of-the-art equipment.

Strategically located next to IN-N-OUT Burger on a major off-ramp Fwy-14.

Additional rental income from window tint and U-Haul services.

Property includes room for expansion and adding supplementary services.

New signal light installation just completed.

Property Details:

Property Type: Specialty

Property Subtype: Car Wash

Year Built: 1994

Building Class: B

Lot Size: 0.66 AC

Parking Ratio: 7.24/1,000 SF

Business Highlights:

Fully redesigned and remodeled less than 2 years ago.

Exclusive car wash attached to IN-N-OUT Burger, a unique feature in Southern California.

Over \$1 million invested in remodeling and converting to express/full service.

High-quality tunnel over 100 feet in length, fully operational as an express service.

Trained staff proficient in all operational aspects, suitable for absentee ownership or portfolio addition.

10 vacuum stations are already in place.

Great opportunity to acquire an express car wash at a fraction of the cost to build one.

Current Performance:

Cars Per Month: 3000+

Gross Annual Sales: \$420,000 +

Net Annual income \$200K + before mortgage payment

1000+ recurring members with an average monthly addition of 120 to 150 members. Projected 1500 Members by July 2024.

Additional rental income of \$1,500/month from tint tenant.

Projected Growth:

1-year projection: 5000+ cars per month, with an average revenue of \$11+ per car and a profit margin of 35% to 40%.

Estimated 2000+ members annually, resulting in gross sales exceeding \$500,000

Gross sales per year.

Membership Management:

Partnered with Everwash platform for streamlined membership management.

Cutting-edge software for billing, collections, processing, and marketing.

Quick sign-up process with license plate recognition integration.

Payouts twice a month with transparent backend dashboard and 24/7 customer service.

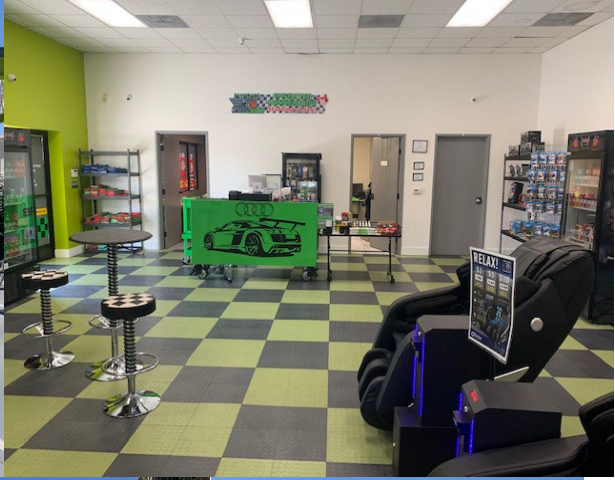
Exclusive Opportunity:

Join a reputable network of over 2,000 car washes nationwide.

Please refrain from contacting anyone at the location.

Signed NDA and Proof of Funds required for detailed information.

Don't miss this opportunity to invest in a thriving car wash business with substantial growth potential. Contact us for further details.





BUSINESS ADVISORS

WWW.LBAWEB.COM

Houmehr "Mike" Panoussi

16200 Ventura Blvd, Suite 319. Encino Ca 91436

Cell: 661.816.1141

E fax: 877.661.0777

panoussi.Lba@gmail.com

BRE # 01853627

Liberty Business Advisors (Palmdale Office)
530 Commerce Ave Unit D, Palmdale Ca 93551

Liberty Business Advisors Of San Francisco
675 Ygnacio Valley Road Suite A202
Walnut Creek Ca, 94596

Proud Member of IBBA

2016 40 Under 40 Honoree



Privacy Notice

The information in this email is confidential and intended solely for the recipients listed above. The content and subject of this Info Sheet may be subject to confidentiality agreements and should be treated with appropriate care and safeguards. Access or distribution to anyone other than the original recipients and parties to the confidentiality agreement is unauthorized. If you have received this communication in error, please immediately notify me and destroy the communication. Any wrongful interception of this transmission is prohibited and punishable under federal law. Liberty Business Advisors Of SF, Inc. and Its Agent Houmehr Mike Panoussi do not assume responsibility for the accuracy or completeness of information presented. All Parties should consult their own attorney and accountant.