

Salt Lake City Industrial

1906 South 3850 West
Salt Lake City, UT 84104

FOR SALE

NAIPremier

COMMERCIAL REAL ESTATE SERVICES, WORLDWIDE

Jim McLachlan

801 750 7991 | jim@naipremier.com





Property Overview

INVESTMENT SUMMARY

Price	CALL FOR PRICE
Year Built	1980
Main Level	Approx. 29,544 USF
2nd Level (mezzanines)	Approx. 4,347 USF
Total Land Area	2.51
Property Type	Industrial

HIGHLIGHTS

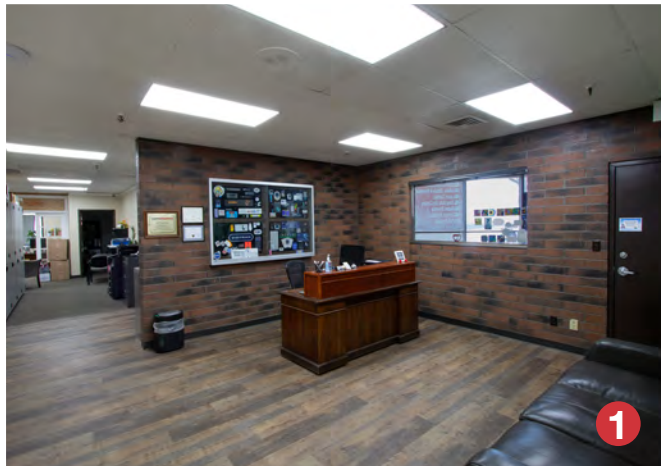
- Close Location To Bangerter Highway
- 3 Miles (7 minutes) to Salt Lake International Airport
- 8 Miles to Downtown Salt Lake City
- Office recently updated
- Conference room
- 6 bathrooms
- (1) 10' x 10' GL door (ramp)
- (1) 10' x 10' DH door
- Zoned: M-1
- 20' Ceiling height
- 480 / 277 / 208 / 110 V (2200 A, 480 V)

NO WARRANTY OR REPRESENTATION, EXPRESS OR IMPLIED, IS MADE AS TO THE ACCURACY OF THE INFORMATION CONTAINED HEREIN, AND THE SAME IS SUBMITTED SUBJECT TO ERRORS, OMISSIONS, CHANGE OF PRICE, RENTAL OR OTHER CONDITIONS, PRIOR SALE, LEASE OR FINANCING, OR WITHDRAWAL WITHOUT NOTICE, AND OF ANY SPECIAL LISTING CONDITIONS IMPOSED BY OUR PRINCIPALS NO WARRANTIES OR REPRESENTATIONS ARE MADE AS TO THE CONDITION OF THE PROPERTY OR ANY HAZARDS CONTAINED THEREIN ARE ANY TO BE IMPLIED.

1906 South 3850 West | Salt Lake City, UT 84104

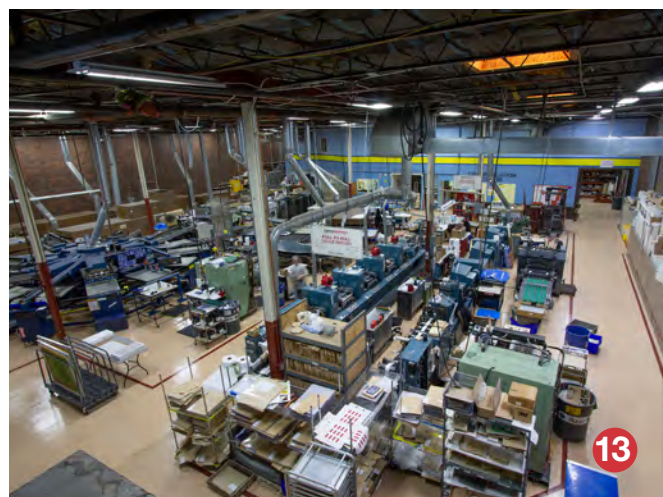
Property Photos

Salt Lake City Industrial
1906 South 3850 West | Salt Lake City, UT 84104



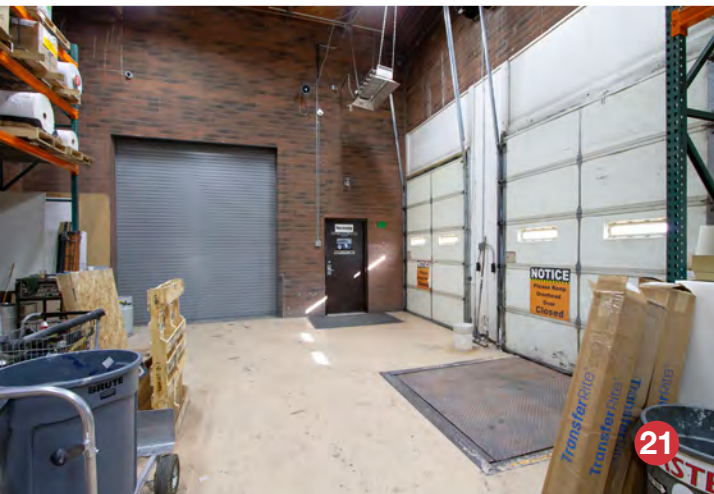
Property Photos

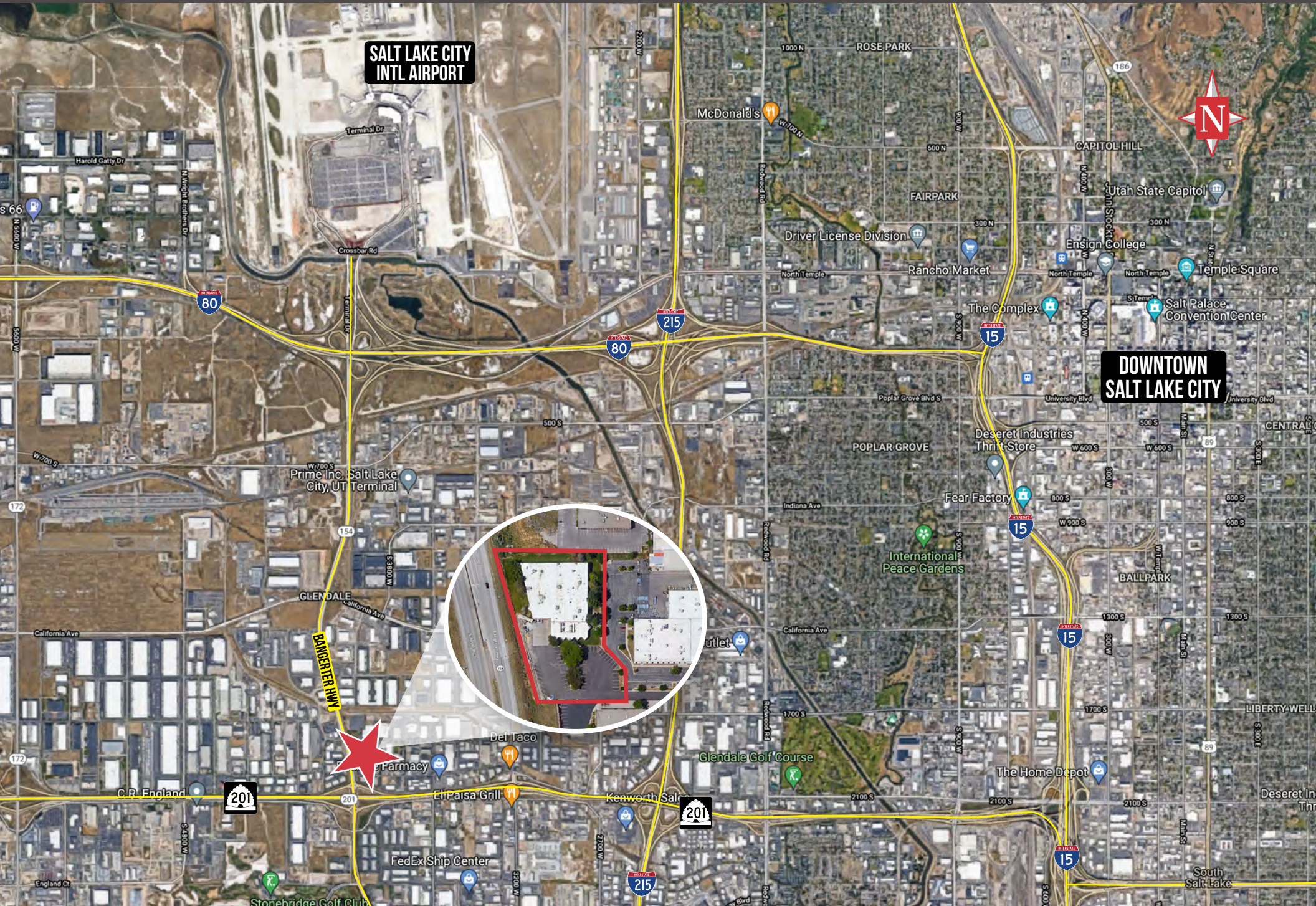
Salt Lake City Industrial
1906 South 3850 West | Salt Lake City, UT 84104



Property Photos

Salt Lake City Industrial
1906 South 3850 West | Salt Lake City, UT 84104





**SALT LAKE CITY
INTL AIRPORT**

**DOWNTOWN
SALT LAKE CITY**

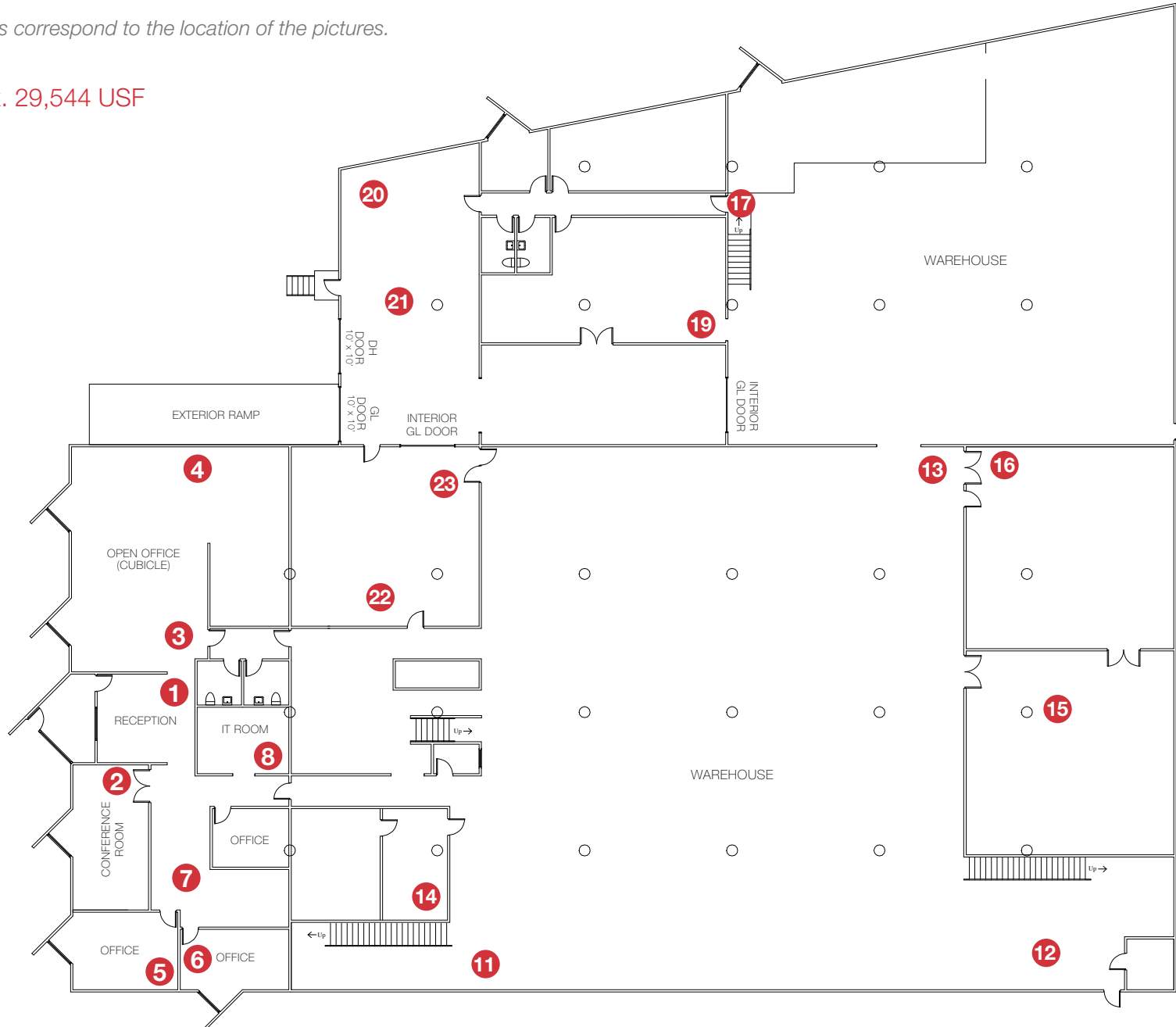


Floorplan - Main Level

Salt Lake City Industrial
1906 South 3850 West | Salt Lake City, UT 84104

Numbers correspond to the location of the pictures.

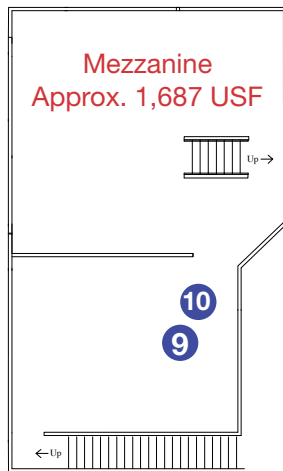
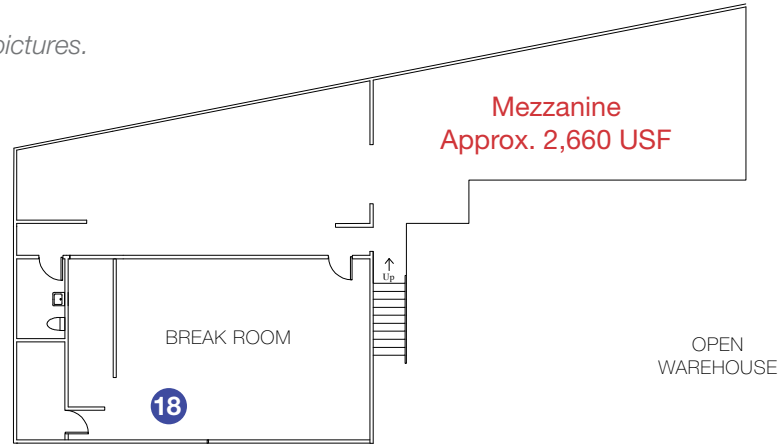
Approx. 29,544 USF



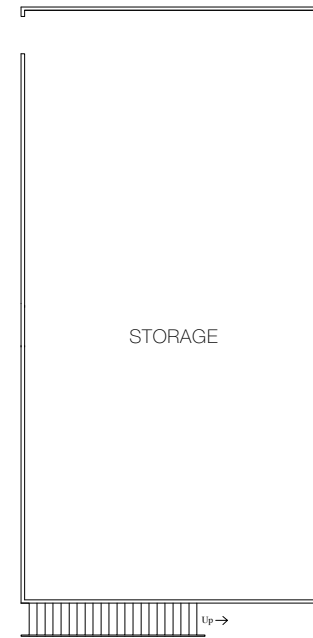
Floorplan - Second Level

Numbers correspond to the location of the pictures.

Approx. 4,347 USF



OPEN WAREHOUSE



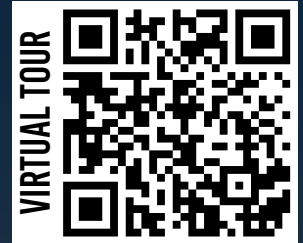
For more information, please contact

Jim McLachlan

Senior Associate

801 750 7991

jim@naipremier.com



NAIPremier

COMMERCIAL REAL ESTATE SERVICES, WORLDWIDE

7455 Union Park Avenue Ste. A, Midvale, Utah 84047

801 255 3333 | naipremier.com

NO WARRANTY OR REPRESENTATION, EXPRESS OR IMPLIED, IS MADE AS TO THE ACCURACY OF THE INFORMATION CONTAINED HEREIN, AND THE SAME IS SUBMITTED SUBJECT TO ERRORS, OMISSIONS, CHANGE OF PRICE, RENTAL OR OTHER CONDITIONS, PRIOR SALE, LEASE OR FINANCING, OR WITHDRAWAL WITHOUT NOTICE, AND OF ANY SPECIAL LISTING CONDITIONS IMPOSED BY OUR PRINCIPALS NO WARRANTIES OR REPRESENTATIONS ARE MADE AS TO THE CONDITION OF THE PROPERTY OR ANY HAZARDS CONTAINED THEREIN ARE ANY TO BE IMPLIED.