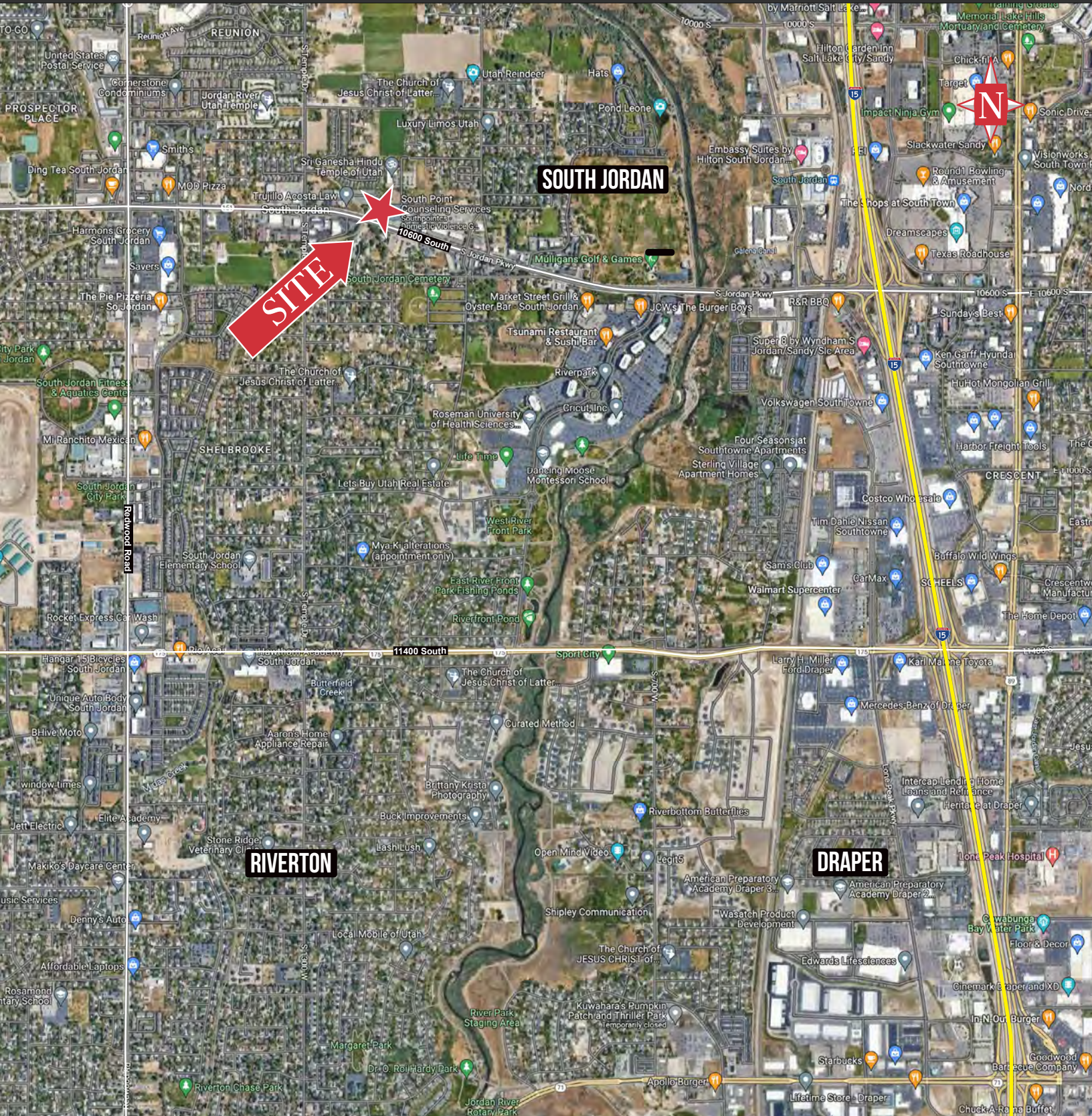


# South Jordan Professional Office

1218 W. South Jordan Parkway  
South Jordan, UT 84095



## OFFICE | FOR LEASE

Located in the heart of the South Jordan commercial and office district. Office space can be leased with or without furnishings. Combined units B and C

### PROPERTY INFORMATION

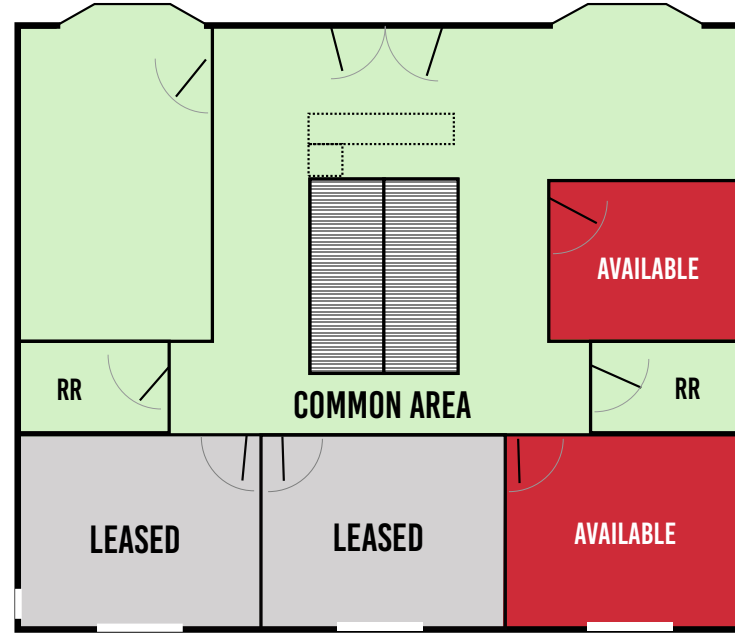
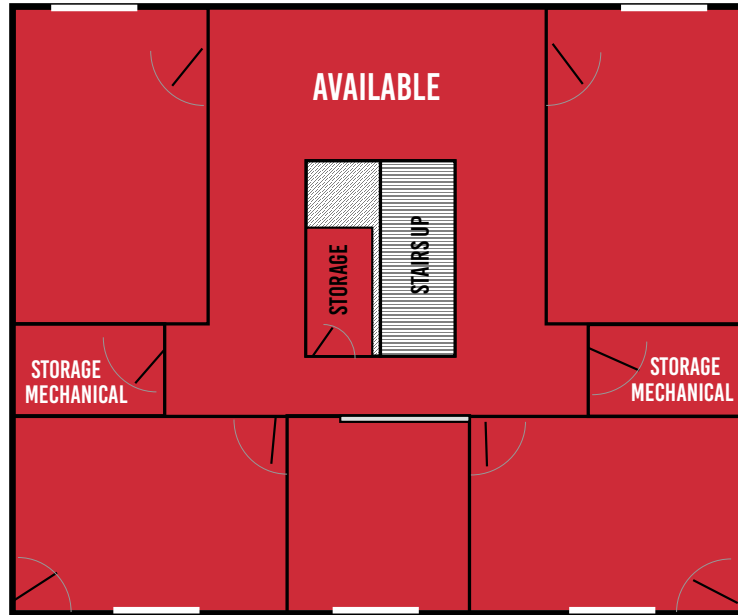
- > 2,791 SF Available
- > 2,436 SF - Basement
- > 356 SF - Main Floor
- > All inclusive rates vary by floor
- > Reception, conference room and waiting area
- > Basement features 2 private exits for access to the rear parking lot.
- > Above grade windows to the rear and window wells to the front
- > Easy access to I-15 via 10600 South



### Floor Plans

Basement - 2,436 SF Available

Main Floor - 356 SF Available



Second Floor

