

LAND FOR SALE



ORANGE COMMERCIAL
Strategic Real Estate Services



SWC OF WEST LOOP 610 AND BISSONNET

ABOUT THE PROPERTY:

This rare tract of land is available in the heart of Bellaire along the south bound side of the West Loop 610. Located on the southwest hard corner of Bissonnet and Loop 610, this is the only tract of land available on the West Loop 610. Surrounded by the City of Bellaire and adjacent to the City of Southside, this tract of land is in the middle of million-dollar homes and an average household income of over \$150,000.

CONTACT INFORMATION:

Bill Wong

713-961-9097 ext. 101

billw@orangecommercial.com

www.orangecommercial.com

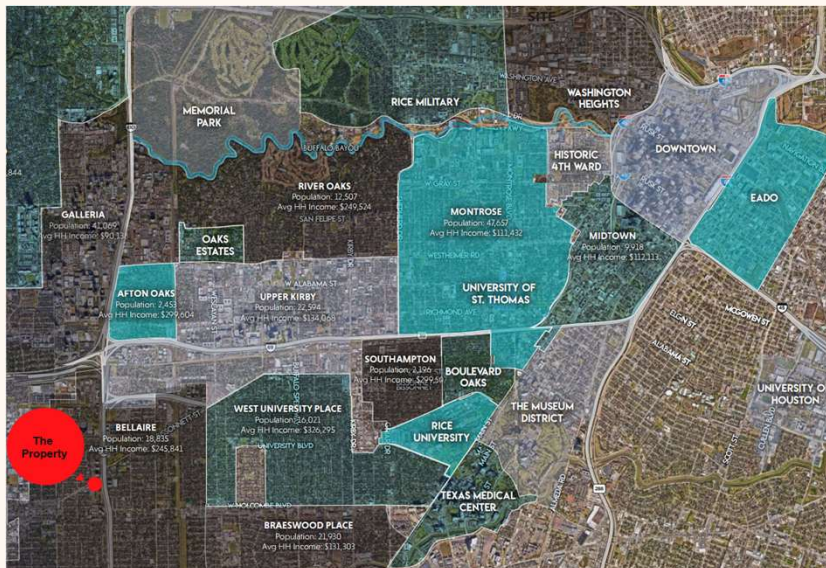
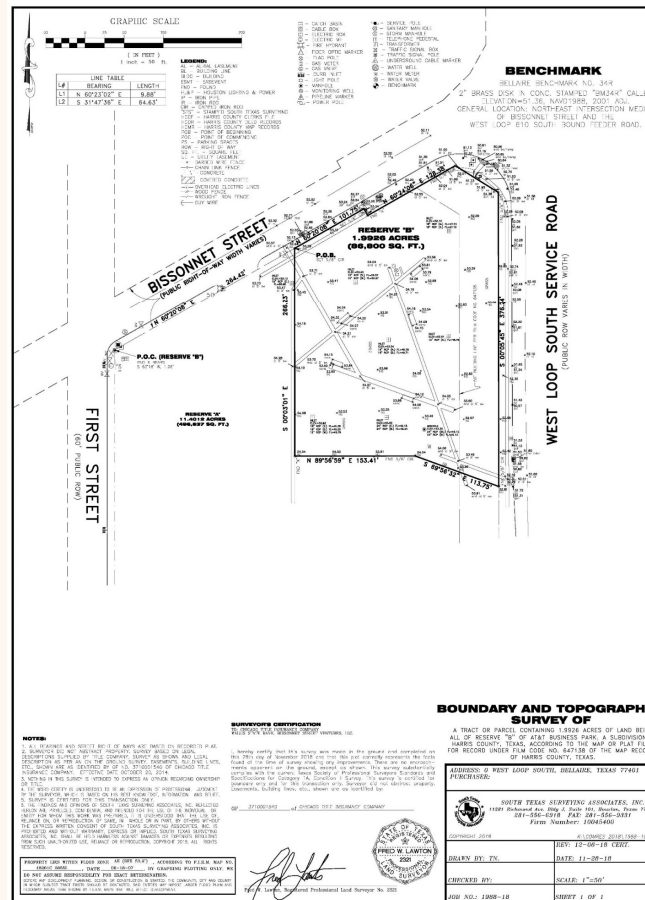
SWC of West Loop 610 and Bissonnet

Availability:
1.9926 Acres / 86,800 SF.

Economics:
Call for Pricing
Tax Rate for the city of Bellaire is 2.227132%



ORANGE COMMERCIAL
Strategic Real Estate Services



This property is subject to prior sale, leasing, financing, change in price, rental or other conditions, corrections, errors, omissions, or removal from market without notice. All information contained in this packet, while based on and supplied by sources deemed reliable, is not in any way warranted or guaranteed, either expressed or implied by Orange Commercial LLC. This packet is solely for information purposes only and under no circumstances whatsoever should be deemed as a contract, note, memorandum or any other form of a binding commitment.

AREA DETAILS

SWC of West Loop 610 and Bissonnet



Demographics:

	1 Mile	5 Miles
Households:	17,062	230,708
Population:	6,997	100,307
Median Income:	\$158,442	\$115,877



Area Retailers:

Target, Sam's Club, Home Depot, HEB, Randalls, Texas Children's, UT Physicians, Methodist Orthopedics, Bellaire Doctors, First Surgical Hospital, Harris Health and Retina Consultants of Texas

Features:

- 140 ft. of frontage on Bissonnet
- 376 ft. of frontage on West Loop 610